

bott vario3

for your Ford

bott

Innovative
system solutions



Lightweight aluminium
construction

Van Racking

bott vario3

As individual as your trade.

Service technician



Fitter



Fleet manager



Roofer



Builder



Painter and decorator



Carpenter



Electrician



Two brands – one system

Regardless of which Ford model you have opted for, we can offer you the ideal bott vario3 van racking solution. The fixing points perfectly align with your Ford vehicle's design. We guarantee an optimum planning process, secure installation and damage free removal. We can offer you a range of pre-configured ready to install modules as well as customised designs for your Ford.

We also have an extensive range of complimentary accessories, load restraint options and organisation systems.

bott vario3 and Ford – connected.



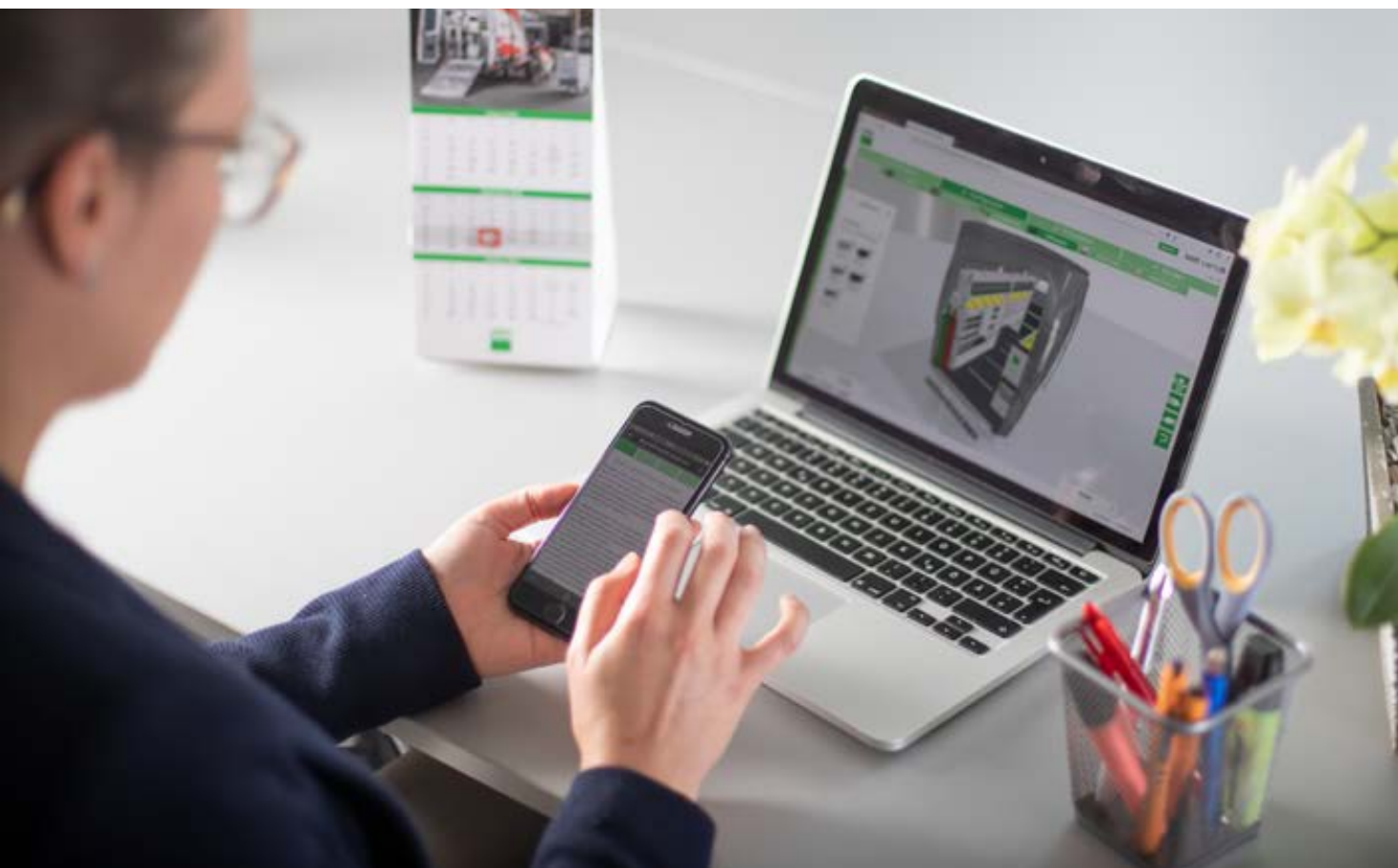
Your idea - our design

Flexible modular system

Customised solutions

Experienced designers

Make the best use of the
space available



Tailored, to suit your needs

Together with your bott planning expert you can customise the bott vario3 in-vehicle equipment to your individual requirements. With the help of a 3D visualisation, you can very quickly get an idea of what your new system will look like - you may well want to re-think it and change one thing or another. The bott team will focus on your requirements for your daily work. The planning begins with a detailed analysis of your needs. We take a close look at the equipment that you must have on a daily basis for your work.

Then our planning experts draw up a precisely-tailored van racking concept. The modular layout of bott vario3 in-vehicle equipment allows it to be configured to meet your needs. All tools and materials can be stowed where they are close to hand. A well designed mobile workspace reduces search times and makes your daily tasks easier.

Range of services

Services for fleets

Full-service solution

Cooperation with vehicle
manufacturers

Financing advice

Efficient use of resources



Your system service provider

You have opted for a Ford commercial vehicle. By making this choice, you have also established the perfect conditions for the installation of bott vario3 in-vehicle equipment.

We collaborate closely with this vehicle manufacturer to ensure that our van racking perfectly fits into all Ford commercial vehicle models. The dimensions and fixing points of the bott vario3 components are a perfect fit for your vehicle's design. This means that you can make the best use of the available storage space. It also gua-

rantees a secure installation and therefore safe vehicle handling, as well as – if worse comes to the worst – maximum safety in an accident. This applies to the ready pre-configured modules as well as our customised van racking solutions, designed by us to perfectly match your needs. Combining your commercial vehicle with bott vario3 van racking therefore means that you have an interconnected system.

Crash tested

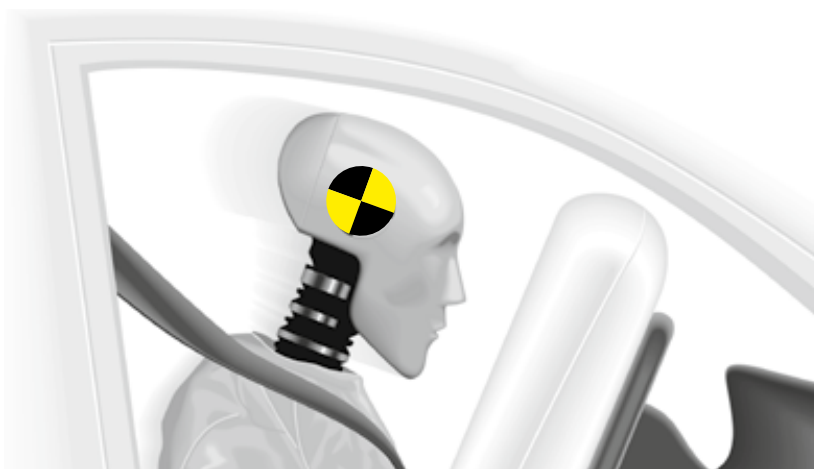
Safety for driver and load

Meets the ECE R44
standard

50 km/h impact speed

bott vario3 in-vehicle equipment always meets the high requirements of the tests. The results demonstrate that the driver and the front passenger can rely on bott vario3 in case of emergency.

To the crash test.



Proven safety

Our crash tests have proven how safe the bott vario3 in-vehicle equipment is for you and your employees. Independent experts conduct the tests with a fully-loaded vehicle. The load on the components is equivalent to that experienced during a traffic accident.

The crash tests simulate the collision of the vehicle with an obstacle at a speed of 50 km/h - in accordance with ECE directive R44. The bott vario3 in-vehicle equipment more than meets the strict requirements of the tests.

In an emergency you can completely rely on bott vario3 in-vehicle equipment.

The tests particularly focus on the fixing points to the bodywork on the floor and the side walls of the vehicle. The overall construction of the in-vehicle equipment is also important. The tests clearly show how it absorbs the enormous forces through systematic torsion of the components. We also pay great attention to all moving parts. Nothing will fall off the shelves and the drawers remain tightly closed.

Floors & Linings

Robust bodywork protection

Versatile attachment points
for load restraint

Easy-to-clean load space



The solution for load space protection

Vehicle specific floors and linings from bott protect the load space against damage in day to day use and help retain the value of your vehicle for the long term. Floors, side linings and, if required, even roof liners are available. The bott vario floor panel is firmly attached to your commercial vehicle. The floor panel has an anti-slip coating, so that you always have a firm footing – even in wet weather. Fitting inner panelling protects the paint work and thus maintains the value of your commercial vehicle.

Our side lining is available in various configurations; made of recyclable plastic or perforated aluminium sheet for use with bott perfo tool hooks and holders.

A roof liner finishes off your load space lining. Further lashing rails for attaching shoring poles can be integrated in the roof liner –with integrated LED lighting. The integration of internal lighting is an essential addition for those working at dawn/dusk or during the night.

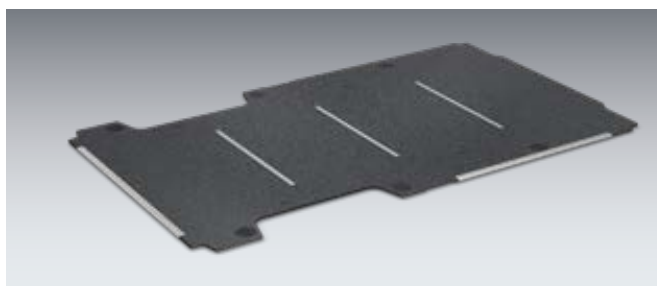
Floor

bott vario floor



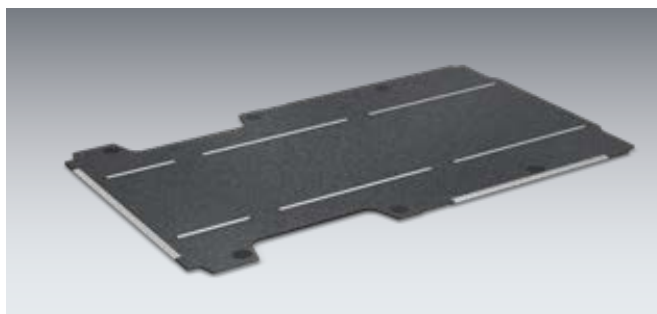
Installation using hold-down cups

- Lightweight and moisture-repellent 12 mm birch plywood floor
- Top side: robust and slip-resistant synthetic resin film coating with bott decor
- Underside: synthetic resin film coating with smooth finish
- Edges: profiled, moisture-resistant grey finish with aluminium edge protection at the door openings
- If the floors have lashing rails, the edge protection is usually integrated
- Pollutant class E1 as per EN 717-2 / anti-slip R10, taber value > 500
- Fixings included
- Integral hold-down cups simplify the installation process



bott vario floor with transverse lashing rails

- With aluminium edge protection at the door openings
- The lashing rails are positioned directly below a roof rib
- Plastic covers ensure easy access to vehicle lashing eyes and make it easier to clean the load space



bott vario floor with longitudinal lashing rails

- With aluminium edge protection at the door openings
- The standard distance between the lashing rails is 880 mm; other distances are possible on request
- Plastic covers ensure easy access to vehicle lashing eyes and make it easier to clean the load space

Basic interior

bott vario floors in various versions

Model	Ranger Doublecab without bedliner**	Ranger Doublecab with bedliner**	Raptor Doublecab with bedliner**		
Model year	2023	2023	2023		
Wheelbase mm	3270	3270	3270		
Without step-edge protection					
With step-edge protection	11310632	11310639	11310647		
Plastic version					
With step-edge protection	11310632.10	11310639.10	11310647.10		

bott vario floors in various versions

Model	Transit Courier	Transit Connect L1	Transit Connect L2		
Model year	2024	2024	2024		
Wheelbase mm	2692	2755	2970		
Without step-edge protection	11320660	11320579 ²	11320580 ²		
With step-edge protection	11310660	11310579 ²	11310580 ²		
With transverse lashing rails	11312660	11312579 ²	11312580 ²		
Number of transverse lashing rails	3	3	4		
With longitudinal lashing rails					

Model	Transit Custom L1-H1	Transit Custom L1-H2	Transit Custom L2-H1	Transit Custom L2-H2	
Model year	2023	2023	2023	2023	
Wheelbase mm	3100	3100	3500	3500	
Without step-edge protection	11320625	11320627	11320626	11320628	
With step-edge protection	11310625	11310627	11310626	11310628	
With transverse lashing rails	11312625	11312627	11312626	11312628	
Number of transverse lashing rails	3	3	4	4	
With longitudinal lashing rails					

Model	Transit L2-FA	Transit L2-HA	Transit L3-FA	Transit L3-HA	Transit L4-HA
Model year	2014	2014	2014	2014	2014
Wheelbase mm	3300	3300	3750	3750	3750 *
Without step-edge protection	11320149 ²	11320150 ²	11320151 ²	11320152 ²	11320153 ²
With step-edge protection	11310149 ²	11310150 ²	11310151 ²	11310152 ²	11310153 ²
With transverse lashing rails	11312149 ²	11312150 ²	11312151 ²	11312152 ²	11312153 ²
Number of transverse lashing rails	3	3	4	4	5
With longitudinal lashing rails	11321149 ²	11321150 ²	11321151 ²	11321152 ²	11321153 ²

Model	Transit L4-HA Double tyres				
Model year	2014				
Wheelbase mm	3750 *				
Without step-edge protection	11320173 ²				
With step-edge protection	11310173 ²				
With transverse lashing rails	11312173 ²				
Number of transverse lashing rails	5				
With longitudinal lashing rails	11321173 ²				

*with overhang ² Fitting without hold-down cups FWD = Front wheel drive RWD = Rear wheel drive
 **Double cab only in combination with hardtop Further versions on request

Interior side lining



bott vario protect interior side lining

- Pre-profiled side lining made from recyclable polypropylene
- Twin-wall panels, 4 mm thick, with structured surface on one side
- Colour: light grey (RAL 7035)
- UV-stable, low weight, will not corrode or decay, chemical resistant
- Extremely light and easy to clean
- Fixings included

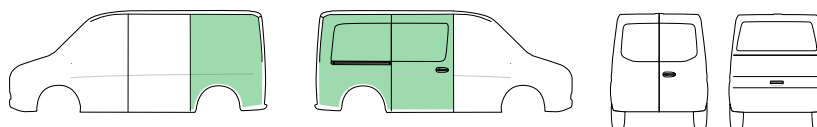


Interior side lining

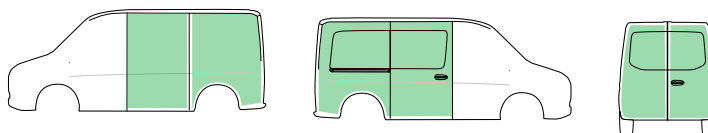
bott vario protect interior side lining



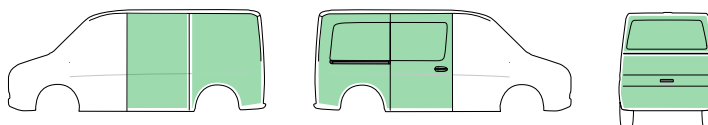
For vehicles with
right-hand sliding door



For vehicles with
right-hand sliding door and rear doors



For vehicles with
right-hand sliding door and tailgate



Model	Transit Courier	Transit Connect L1	Transit Connect L2		
Model year	2024	2024	2024		
Wheelbase mm	2692	2755	2970		
For vehicles with right-hand sliding door	12225455.95	12225379.95	12225384.95		
For vehicles with right-hand sliding door and rear doors	12225456.95	12225380.95	12225385.95		
For vehicles with right-hand sliding door and tailgate	12225457.95	12225381.95	12225386.95		

Model	Transit Custom L1H1	Transit Custom L1H2	Transit Custom L2H1	Transit Custom L2H2	
Model year	2023	2023	2023	2023	
Wheelbase mm	3100	3100	3500	3500	
For vehicles with right-hand sliding door	12225437.95	12225437.95	12225446.95	12225446.95	
For vehicles with right-hand sliding door and rear doors	12225438.95	12225442.95	12225447.95	12225451.95	
For vehicles with right-hand sliding door and tailgate	12225439.95	12225443.95	12225448.95	12225452.95	

Model	Transit L2-H2-FA-HA	Transit L2-H3-FA-HA **	Transit L3-H2-FA-HA	Transit L3-H3-FA-HA **	Transit L4-H3-HA **
Model year	2014	2014	2014	2014	2014
Wheelbase mm	3300	3300	3750	3750	3750 *
For vehicles with right-hand sliding door	12225189.95	12225191.95	12225193.95	12225195.95	12225197.95
For vehicles with right-hand sliding door and rear doors	12225190.95	12225192.95	12225194.95	12225196.95	12225198.95

*with overhang †High roof version with full height side lining FA= FWD - Front wheel drive HA = RWD - Rear wheel drive
Order references for vehicles with 2 sliding doors available on request

Interior side lining



bott vario protect plus interior side lining

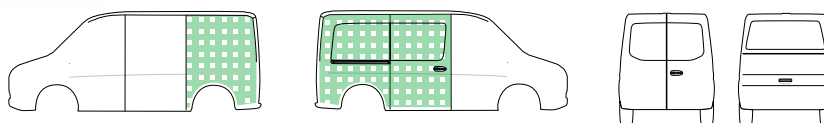
- Pre-profiled side lining made of 1mm thick aluminium
- Light and extremely resilient
- perfo perforated panel for attaching perfo hooks and holders
- Fixings included

Interior side lining

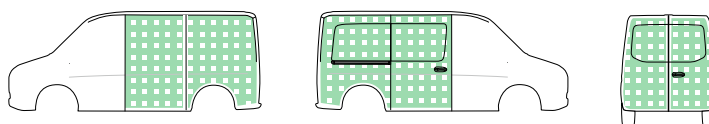
bott vario protect plus interior side lining



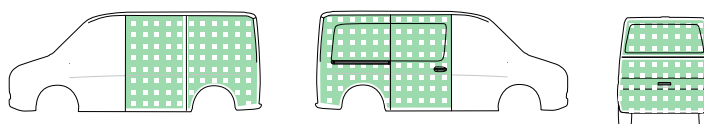
For vehicles with
right-hand sliding door



For vehicles with
right-hand sliding door and rear doors



For vehicles with
right-hand sliding door and tailgate



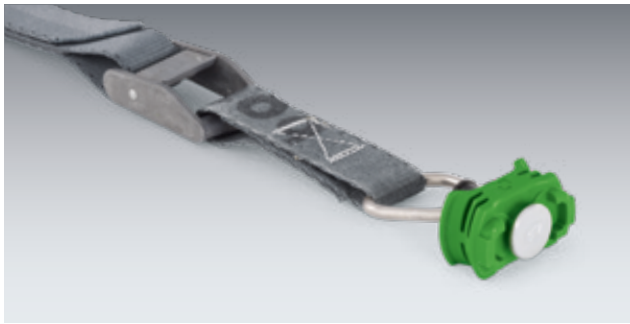
Model	Transit Courier	Transit Connect L1	Transit Connect L2		
Model year	2024	2024	2024		
Wheelbase mm	2692	2755	2970		
For vehicles with right-hand sliding door	12225455.98	12225379.98	12225384.98		
For vehicles with right-hand sliding door and rear doors	12225456.98	12225380.98	12225385.98		
For vehicles with right-hand sliding door and tailgate	12225457.98	12225381.98	12225386.98		

Model	Transit Custom L1H1	Transit Custom L1H2	Transit Custom L2H1	Transit Custom L2H2	
Model year	2023	2023	2023	2023	
Wheelbase mm	3100	3100	3500	3500	
For vehicles with right-hand sliding door	12225437.98	12225437.98	12225446.98	12225446.98	
For vehicles with right-hand sliding door and rear doors	12225438.98	12225442.98	12225447.98	12225451.98	
For vehicles with right-hand sliding door and tailgate	12225439.98	12225443.98	12225448.98	12225452.98	

Model	Transit L2-H2-FA-HA	Transit L2-H3-FA-HA **	Transit L3-H2-FA-HA	Transit L3-H3-FA-HA **	Transit L4-H3-HA **
Model year	2014	2014	2014	2014	2014
Wheelbase mm	3300	3300	3750	3750	3750 *
For vehicles with right-hand sliding door	12225189.98	12225191.98	12225193.98	12225195.98	12225197.98
For vehicles with right-hand sliding door and rear doors	12225190.98	12225192.98	12225194.98	12225196.98	12225198.98

*with overhang **High roof version with full height side lining FA= FWD - Front wheel drive HA = RWD - Rear wheel drive
Order references for vehicles with 2 sliding doors available on request

Interior side lining



Interior side linings with modular wall connection system (rail / prorail)

- bott vario protect interior side linings with integrated lashing rails with Airline profile
- for fixing bott vario in-vehicle equipment or for load restraint with the aid of lashing straps and fittings
- Load is uniformly distributed through the vehicle body shell as the rails are bonded in place
- Lashing rails can remain in the vehicle on removal of racking and represent added value
- Fixings included

bott vario protect rail

- with central lashing rail



bott vario protect prorail

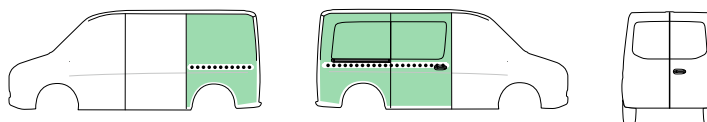
- with central & upper lashing rail



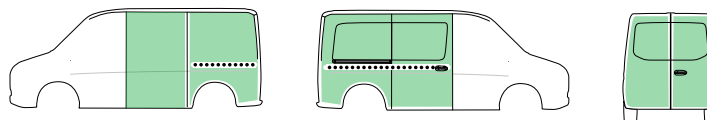
Interior side lining

bott vario protect rail interior side lining

For vehicles with
right-hand sliding door



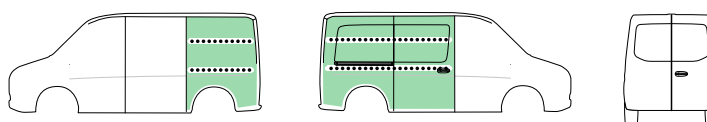
For vehicles with
right-hand sliding door and rear doors



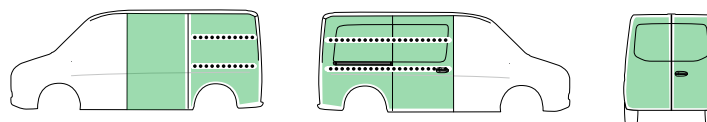
Model	Transit L2-H2-FA-HA	Transit L2-H3-FA-HA **	Transit L3-H2-FA-HA	Transit L3-H3-FA-HA **	Transit L4-H3-HA **
Model year	2014	2014	2014	2014	2014
Wheelbase mm	3300	3300	3750	3750	3750 *
For vehicles with right-hand sliding door - with central lashing rail	12220189.95	12220191.95	12220193.95	12220195.95	12220197.95
For vehicles with right-hand sliding door and rear doors with central lashing rail	12220190.95	12220192.95	12220194.95	12220196.95	12220198.95

bott vario protect prorail interior side lining

For vehicles with
right-hand sliding door



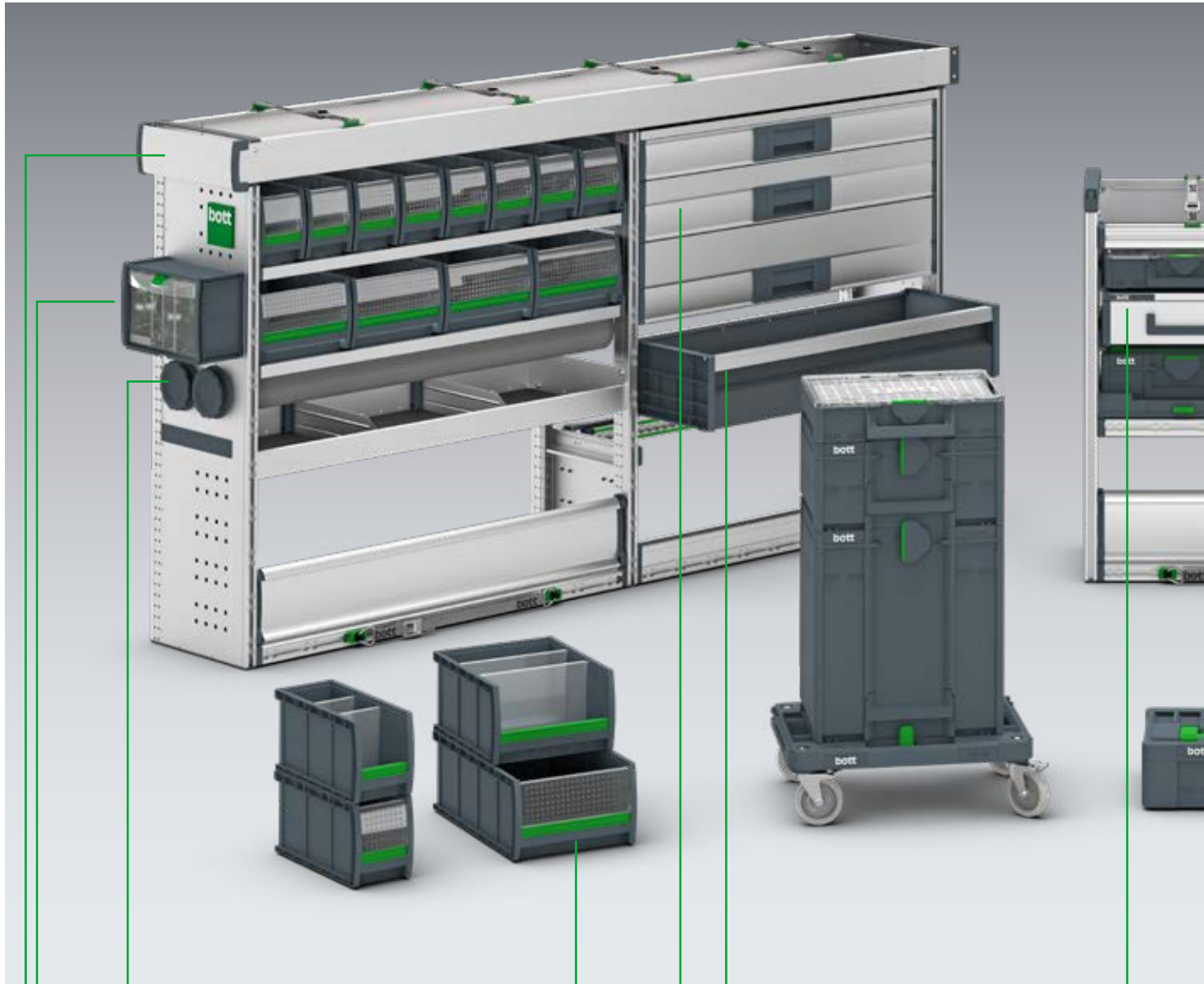
For vehicles with
right-hand sliding door and rear doors



Model	Transit L2-H2-FA-HA	Transit L2-H3-FA-HA **	Transit L3-H2-FA-HA	Transit L3-H3-FA-HA **	Transit L4-H3-HA **
Model year	2014	2014	2014	2014	2014
Wheelbase mm	3300	3300	3750	3750	3750 *
For vehicles with right-hand sliding door - with central and upper lashing rails	12221189.95	12221191.95	12221193.95	12221195.95	12221197.95
For vehicles with right-hand sliding door and rear doors - with central and upper lashing rails	12221190.95	12221192.95	12221194.95	12221196.95	12221198.95

*with overhang ¹High roof version with full height side lining FA= FWD - Front wheel drive HA = RWD - Rear wheel drive
Order references for vehicles with 2 sliding doors available on request

Modulfeatures



Long item holder
for easy transport of long
and heavy tools



TiltBox
for the practical storage of small parts
and consumables



Long item top tray
for the safe storage of pipes
and profiles



varioSlide
lightweight drawers with a
generous usable volume



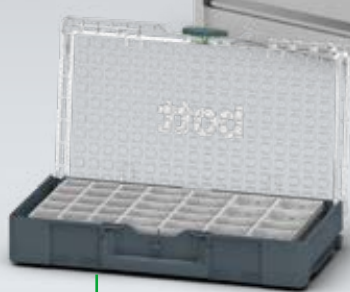
Drawers
with 100% extension telescopic
slides and 70kg load capacity



bottBoxes
practical storage boxes for
service vehicles and workshops



bott vario3 V-Box
practical storage compartment for small tools and accessories



Systainer³
flexible system case in two widths and six heights



Systainer³ Organizer
practical small parts case compatible with all Systainer³ products



varioCase
service case made from lightweight aluminium or robust sheet steel



Rotated drawers
can be accessed ergonomically from outside the vehicle



Shelf with C-Lash
makes it easy to restrain loads inside the shelves



Lashing rails and tie-down points
integrated throughout the entire system for the safe transport of materials and power tools

Module packages



Ford Transit
Connect

Ford
Transit

Modules for every vehicle size



The bott vario3 van racking modules for your commercial vehicle offer versatile components for dividing the storage space. These can be easily adapted to the individual requirements of your trade. The bott vario3 van racking designers paid particular attention to safety, functionality and to making optimum use of the available space.

Flexible modular system

Customised solutions

Experienced designers

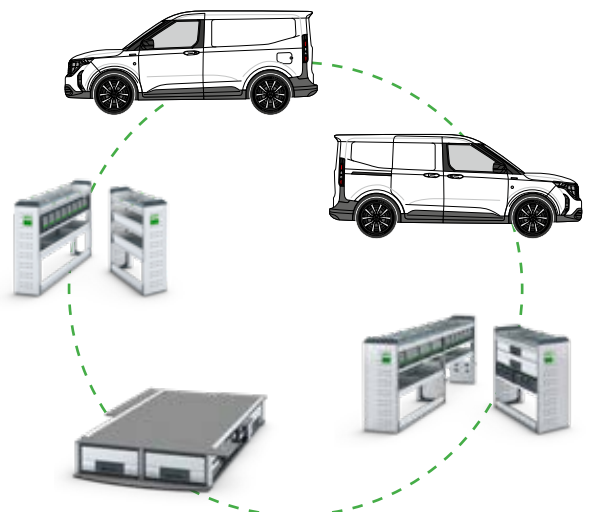
Make the best use of the
space available



Tailored, to suit your needs

Together with your bott planning expert you can customise the bott vario3 in-vehicle equipment to your individual requirements. With the help of a 3D visualisation, you can very quickly get an idea of what your new system will look like - you may well want to rethink it and change one thing or another. The bott team will focus on your requirements for your daily work. The planning begins with a detailed analysis of your needs. We take a close look at the equipment that you must have on a daily basis for your work.

Then our planning experts draw up a precisely-tailored van racking concept. The modular layout of bott vario3 in-vehicle equipment allows it to be configured to meet your needs. All tools and materials can be stored where they are close to hand. A well designed mobile workspace reduces search times and makes your daily tasks easier.

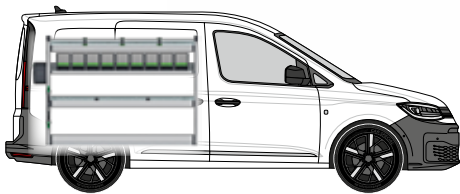


Transit Connect L1

Wheelbase 2755 mm



bott vario3 Silver Package




The left-hand module contains:


- 1 aluminium shelf with anti-slip mat, integrated load restraint (-oo- / -C-) and 3 lashing straps (-C-)
- 1 bottBox shelf with 9 bottBoxes
- 1 aluminium shelf with anti-slip mat and dividers
- 1 floor storage compartment with integrated load restraint (-oo-)
- 2 end frames with integrated load restraint (-oo-)

The right-hand module contains:

- 1 aluminium shelf with anti-slip mat, integrated load restraint (-oo- / -C-) and 2 lashing straps (-C-)
- 3 heavy duty drawers with anti-slip mats
- 1 drop-front shelf with aluminium drop-front and anti-slip mat
- 1 floor storage compartment with integrated load restraint (-oo-)
- 1 Case holder with Systainer³ Organiser M 89 with 12 boxes

Left module W x D x H [mm]	1374 x 376 x 1000
Right module W x D x H [mm]	834 x 376 x 950
Order ref.	70099082.19M
Installation kit	73510067.51V

	-C- Lash All types of load restraint that utilise the -C- Lash lashing strap.	TopLash -C- Shelf load restraint.
---	---	---

	FrontLash -OO- Horizontal and vertical load restraint at the shelf fronts. Compatible with the Airline system.
---	--



Accessories included in the package

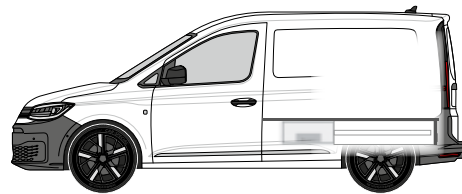
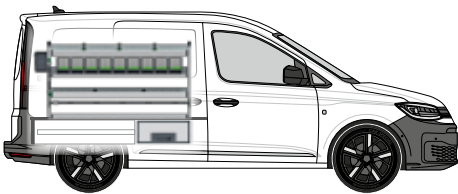
- 1 document holder
- 1 TiltBox
- 1 lashing strap with fitting and cam buckle
- 1 T-slot mounted C-Lash lashing strap

Transit Connect L1

Wheelbase 2755 mm



bott vario3 Green Package




The left-hand module contains:


- 1 aluminium shelf with anti-slip mat, integrated load restraint (-oo- / -C-) and 3 lashing straps (-C-)
- 1 bottBox shelf with 9 bottBoxes
- 1 aluminium shelf with anti-slip mat and dividers
- 1 floor storage compartment with integrated load restraint (-oo-)
- 2 end frames with integrated load restraint (-oo-)

The under floor module contains:

- 3 heavy duty drawers (70 kg) with anti-slip mats
- Height 250 mm
- Free cargo area
- Theft protection, since the stored material is not visible from the outside. Easy use of the sliding and rear door. Large storage space. The under floor module can be ordered separately.

Left module W x D x H [mm]	1374 x 376 x 750
Order ref. incl. Under floor module	70099083.19M
Installation kit	73510067.51V
Order ref. Under floor module	70010053.19V

	-C- Lash All types of load restraint that utilise the -C- Lash lashing strap.	TopLash -C- Shelf load restraint.
---	---	---

	FrontLash -OO- Horizontal and vertical load restraint at the shelf fronts. Compatible with the Airline system.
---	--



Accessories included in the package

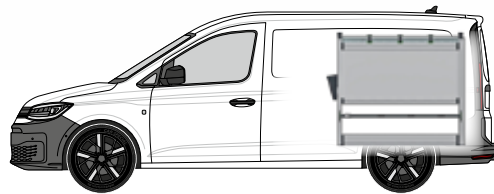
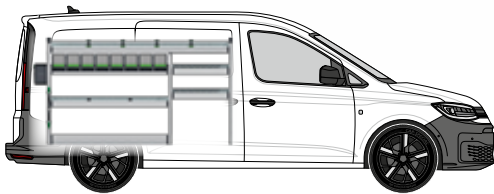
- 1 document holder
- 1 lashing strap with fitting and cam buckle
- 1 TiltBox
- 1 T-slot mounted C-Lash lashing strap

Transit Connect L2

Wheelbase 2970 mm



bott vario3 Silver Package




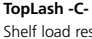
The left-hand module contains:


- 1 aluminium shelf with anti-slip mat, integrated load restraint (-C-) and 4 lashing straps (-C-)
- 1 bottBox shelf with 8 bottBoxes
- 3 aluminium shelves with anti-slip mats and dividers
- 1 floor storage compartment with integrated load restraint (-oo-)
- 1 floor storage compartment with cam buckle strap (-C-)
- 3 end frames with integrated load restraint (-oo-)

The right-hand module contains:

- 1 aluminium shelf with anti-slip mat, integrated load restraint (-C-) and 3 lashing straps (-C-)
- 3 heavy duty drawers with anti-slip mats
- 1 case support beam with 2 Systainer³ L 187
- 1 floor storage compartment with integrated load restraint (-oo-)
- 1 Case holder with Systainer³ Organiser M 89 with 12 boxes

Left module W x D x H [mm]	1710 x 376 x 1000
Right module W x D x H [mm]	1038 x 376 x 950
Order ref.	70099084.19M
Installation kit	73510067.51V

	-C- Lash All types of load restraint that utilise the -C- Lash lashing strap.		TopLash -C- Shelf load restraint.
---	---	---	---

	FrontLash -OO- Horizontal and vertical load restraint at the shelf fronts. Compatible with the Airline system.
---	--



Accessories included in the package

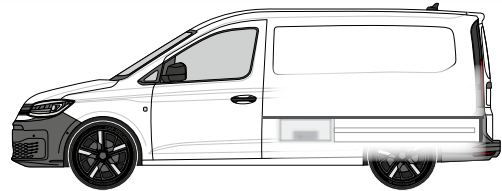
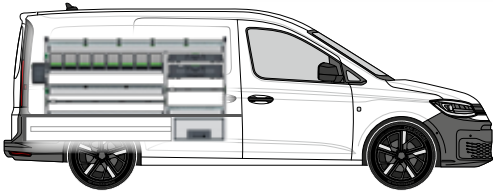
- 1 document holder
- 1 lashing strap with fitting and cam buckle
- 1 TiltBox
- 1 T-slot mounted C-Lash lashing strap

Transit Connect L2

Wheelbase 2970 mm



bott vario3 Green Package




The left-hand module contains:


- 1 aluminium shelf with anti-slip mat, integrated load restraint (-oo- / -C-) and 5 lashing straps (-C-)
- 1 bottBox shelf with 8 bottBoxes
- 1 aluminium shelf with anti-slip mat and dividers
- 1 Systainer³ Organizer L 89
- 1 Systainer³ L 137
- 1 floor storage compartment with integrated load restraint (-oo-)
- 1 floor storage compartment with aluminium shelf and cam buckle strap (-C-)
- 3 end frames with integrated load restraint (-oo-)

The under floor module contains:

- 3 heavy duty drawers (70 kg) with anti-slip mats
- Height 250 mm
- Free cargo area
- Theft protection, since the stored material is not visible from the outside. Easy use of the sliding and rear door. Large storage space. The under floor module can be ordered separately.

Left module W x D x H [mm]	1710 x 376 x 750
Order ref. incl. Under floor module	70099085.19M
Installation kit	73510067.51V
Order ref. Under floor module	70010054.19V

	-C- Lash All types of load restraint that utilise the -C- Lash lashing strap.	TopLash -C- Shelf load restraint.
---	---	---

	FrontLash -OO- Horizontal and vertical load restraint at the shelf fronts. Compatible with the Airline system.
---	--



Accessories included in the package

- 1 document holder
- 1 lashing strap with fitting and cam buckle
- 1 TiltBox
- 1 T-slot mounted C-Lash lashing strap

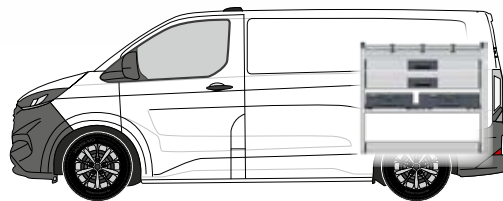
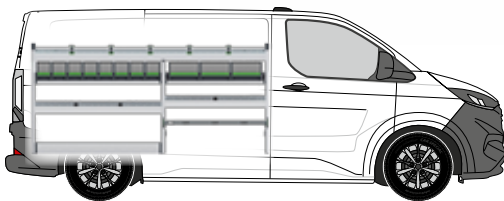
Transit Custom L1-H1

Wheelbase 3100 mm



Module packages

bott vario3 Silver Package




The left-hand module contains:


- 1 aluminium shelf with anti-slip mat, integrated load restraint (-C-) and 5 lashing straps (-C-)
- 2 bottBox shelves with 11 bottBoxes
- 2 aluminium shelves with anti-slip mats and dividers
- 1 floor storage compartment with integrated load restraint (-oo-)
- 1 floor storage compartment with cam buckle strap (-C-)
- 2 end frames with integrated load restraint (-oo-)

The right-hand module contains:

- 1 aluminium shelf with anti-slip mat, integrated load restraint (-C-) and 3 lashing straps (-C-)
- 2 heavy duty drawers with anti-slip mats
- 1 case support beam with 1 Systainer³ M 187 and 1 Systainer³ L 187
- 1 floor storage compartment with integrated load restraint (-oo-)

Left module W x D x H [mm]	2046 x 376 x 950
Right module W x D x H [mm]	1038 x 376 x 950
Order ref.	70099050.19M
Installation kit	73510067.51V

	-C- Lash All types of load restraint that utilise the -C- Lash lashing strap.	TopLash -C- Shelf load restraint.
---	---	---

	FrontLash -OO- Horizontal and vertical load restraint at the shelf fronts. Compatible with the Airline system.
---	--

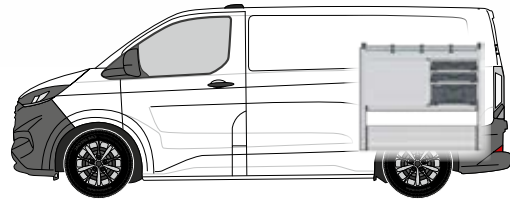


Accessories included in the package

- 1 document holder
- 1 lashing strap with fitting and cam buckle
- 1 TiltBox
- 1 T-slot mounted C-Lash lashing strap



bott vario3 Green Package



The left-hand module contains:

- 1 drop-front shelf with aluminium drop-front and anti-slip mat
- 2 bottBox shelves with 14 bottBoxes
- 2 aluminium shelves with anti-slip mats, integrated load restraint (-oo- / -C-) and 5 lashing straps (-C-)
- 1 drop-front shelf with aluminium drop-front and anti-slip mat
- 1 aluminium shelf with anti-slip mat and divider
- 1 floor storage compartment with integrated load restraint (-oo-) and aluminium drop-front
- 1 load restraint kit with lashing strap (-oo-)
- 3 end frames with integrated load restraint (-oo-)

The right-hand module contains:

- 1 aluminium shelf with anti-slip mat, integrated load restraint (-oo- / -C-) and 3 lashing straps (-C-)
- 3 heavy duty drawers with anti-slip mats
- 2 Systainer³ Organizer M 89 with 12 boxes each
- 1 Systainer³ M 187
- 1 floor storage compartment with integrated load restraint (-oo-) and 2 aluminium drop-fronts

Left module W x D x H [mm]	2046 x 376 x 1250
Right module W x D x H [mm]	1038 x 376 x 950
Order ref.	70099051.19M
Installation kit	73510067.51V

	-C- Lash All types of load restraint that utilise the -C- Lash lashing strap.		TopLash -C Shelf load restraint.
--	---	--	--

	FrontLash -OO- Horizontal and vertical load restraint at the shelf fronts. Compatible with the Airline system.
--	--



Accessories included in the package

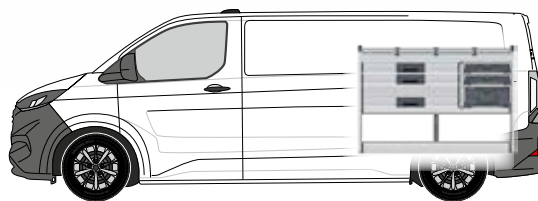
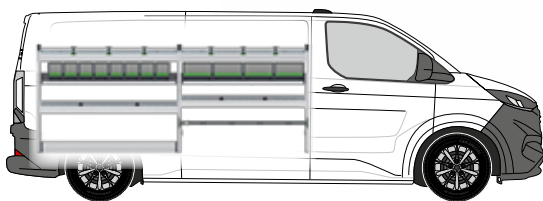
- 1 document holder
- 1 lashing strap with fitting and cam buckle
- 1 TiltBox
- 1 T-slot mounted C-Lash lashing strap

Transit Custom L2-H1

Wheelbase
3500 mm



bott vario3 Silver Package





The left-hand module contains:

- 2 aluminium shelves with anti-slip mats, integrated load restraint (-C-) and 6 lashing straps (-C-)
- 2 bottBox shelves with 12 bottBoxes
- 2 aluminium shelves with anti-slip mats and dividers
- 1 floor storage compartment with integrated load restraint (-oo-)
- 1 floor storage compartment with cam buckle strap (-C-)
- 2 end frames with integrated load restraint (-oo-)

The right-hand module contains:

- 1 aluminium shelf with anti-slip mat, integrated load restraint (-C-) and 3 lashing straps (-C-)
- 3 heavy duty drawers with anti-slip mats
- 2 Systainer³ Organizer M 89 with 12 boxes each
- 1 Systainer³ M 187
- 1 floor storage compartment with integrated load restraint (-oo-)

Left module W x D x H [mm]	2382 x 376 x 950
Right module W x D x H [mm]	1374 x 376 x 950
Order ref.	70099052.19M
Installation kit	73510067.51V

	-C- Lash All types of load restraint that utilise the -C- Lash lashing strap.	TopLash -C- Shelf load restraint.
	FrontLash -OO- Horizontal and vertical load restraint at the shelf fronts. Compatible with the Airline system.	



Accessories included in the package

- 1 document holder
- 1 lashing strap with fitting and cam buckle
- 1 TiltBox
- 1 T-slot mounted C-Lash lashing strap

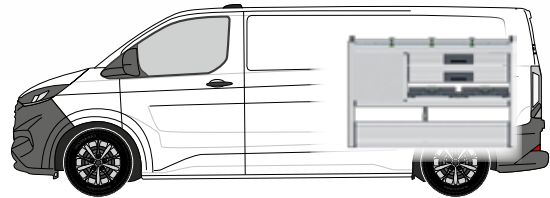
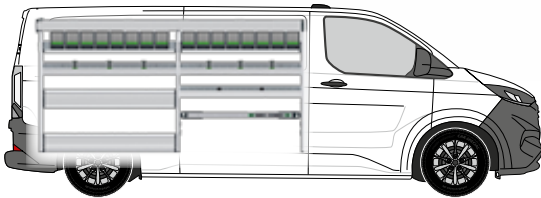


Transit Custom L2-H1

Wheelbase
3500 mm



bott vario3 Green Package



The left-hand module contains:

- 1 aluminium long item top tray with anti-slip mat
- 2 bottBox shelves with 16 bottBoxes
- 2 aluminium shelves with anti-slip mats, integrated load restraint (-oo- / -C-) and 6 lashing straps (-C-)
- 1 drop-front shelf with aluminium drop-front and anti-slip mat
- 1 aluminium shelf with anti-slip mat and dividers
- 1 floor storage compartment with integrated load restraint (-oo-) and aluminium drop-front
- 1 load restraint kit with lashing strap (-oo-)
- 3 end frames with integrated load restraint (-oo-)

The right-hand module contains:

- 1 aluminium shelf with anti-slip mat, integrated load restraint (-oo- / -C-) and 3 lashing straps (-C-)
- 5 heavy duty drawers with anti-slip mats
- 2 Systainer³ Organizer M 89 with 12 boxes each
- 1 floor storage compartment with integrated load restraint (-oo-) and 2 aluminium drop-fronts

Left module W x D x H [mm]	2382 x 376 x 1200
Right module W x D x H [mm]	1374 x 376 x 950
Order ref.	70099053.19M
Installation kit	73510067.51V

	-C- Lash All types of load restraint that utilise the -C- Lash lashing strap.	TopLash -C- Shelf load restraint.
--	---	---

	FrontLash -OO- Horizontal and vertical load restraint at the shelf fronts. Compatible with the Airline system.
--	--



Accessories included in the package

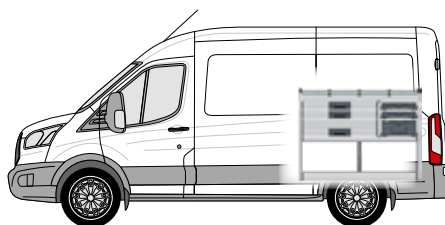
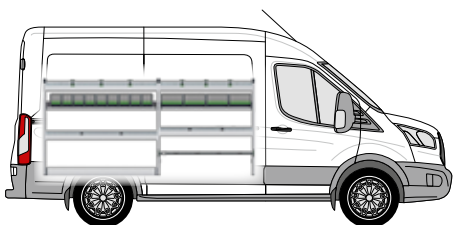
- 1 document holder
- 1 lashing strap with fitting and cam buckle
- 1 TiltBox
- 1 T-slot mounted C-Lash lashing strap

Transit L2-H2

Wheelbase
3300 mm



bott vario3 Silver Package




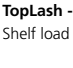
The left-hand module contains:


- 2 aluminium shelves with anti-slip mats, integrated load restraint (-C-) and 6 lashing straps (-C-)
- 2 bottBox shelves with 13 bottBoxes
- 2 aluminium shelves with anti-slip mats and dividers
- 1 floor storage compartment with integrated load restraint (-oo-)
- 1 floor storage compartment with cam buckle strap (-C-)
- 2 end frames with integrated load restraint (-oo-)

The right-hand module contains:

- 1 aluminium shelf with anti-slip mat, integrated load restraint (-C-) and 3 lashing straps (-C-)
- 3 heavy duty drawers with anti-slip mats
- 2 Systainer³ Organizer M 89 with 12 boxes each
- 1 Systainer³ M 187
- 1 floor storage compartment with integrated load restraint (-oo-)

Left module W x D x H [mm]	2494 x 376 x 1150
Right module W x D x H [mm]	1374 x 376 x 1050
Order ref.	70099054.19M
Installation kit	73510067.51V

	-C- Lash All types of load restraint that utilise the -C- Lash lashing strap.		TopLash -C- Shelf load restraint.
---	---	---	---

	FrontLash -OO- Horizontal and vertical load restraint at the shelf fronts. Compatible with the Airline system.
---	--



Accessories included in the package

- 1 document holder
- 1 lashing strap with fitting and cam buckle
- 1 TiltBox
- 1 T-slot mounted C-Lash lashing strap

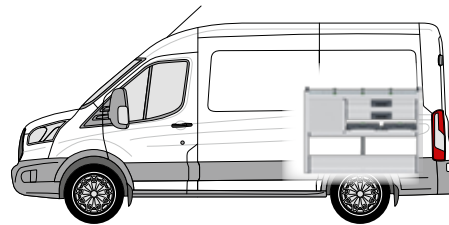
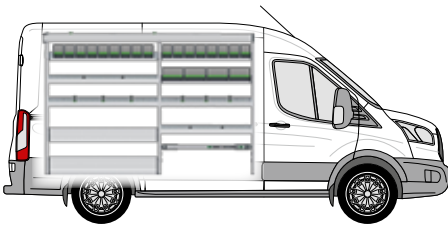


Transit L2-H2

Wheelbase
3300 mm



bott vario3 Green Package



The left-hand module contains:

- 1 aluminium long item top tray with anti-slip mat
- 3 bottBox shelves with 21 bottBoxes
- 2 aluminium shelves with anti-slip mats, integrated load restraint (-oo- / -C-) and 6 lashing straps (-C-)
- 1 drop-front shelf with aluminium drop-front and anti-slip mat
- 2 aluminium shelves with anti-slip mats and dividers
- 1 floor storage compartment with integrated load restraint (-oo-) and aluminium drop-front
- 1 load restraint kit with lashing strap (-oo-)
- 3 end frames with integrated load restraint (-oo-)

The right-hand module contains:

- 1 aluminium shelf with anti-slip mat, integrated load restraint (-oo- / -C-) and 3 lashing straps (-C-)
- 5 heavy duty drawers with anti-slip mats
- 2 Systainer³ Organizer M 89 with 12 boxes each
- 1 floor storage compartment with integrated load restraint (-oo-) and 2 aluminium drop-fronts

Left module W x D x H [mm]	2494 x 376 x 1700
Right module W x D x H [mm]	1374 x 488 x 1050
Order ref.	70099055.19M
Installation kit	73510067.51V

	-C- Lash All types of load restraint that utilise the -C- Lash lashing strap.		TopLash -C- Shelf load restraint.
--	---	--	---

	FrontLash -OO- Horizontal and vertical load restraint at the shelf fronts. Compatible with the Airline system.
--	--



Accessories included in the package

- 1 document holder
- 1 lashing strap with fitting and cam buckle
- 1 TiltBox
- 1 T-slot mounted C-Lash lashing strap

Roof rack systems

Maximum storage space

Light, stable and secure

Weatherproof aluminium



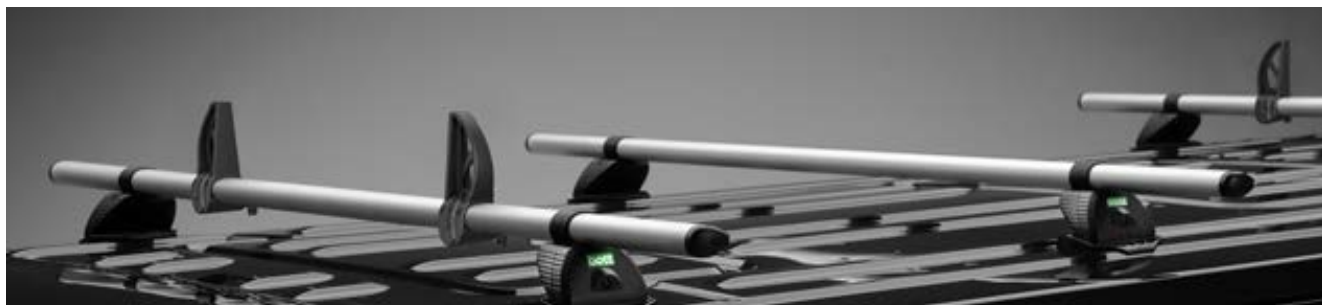
Practical roof storage solutions

You'll find the most suitable load support system among our product range. Our roof rack systems are light, stable and secure. They offer maximum storage space on the vehicle roof and are efficient and durable. The aerodynamic components made of anodised aluminium minimise air resistance and wind noise.

With our comprehensive range of accessories you can extend the roof rack system according to your needs, for example with a ladder lift for ergonomic and convenient ladder storage. The bott ladder lifts are suitable for quick, simple and safe loading and unloading of the ladders secured on the vehicle roof.

Roof rack systems

Basic roof rack



Model	Transit Connect	Transit Connect	Transit Connect		
Year of construction	2022	2022	2022		
Wheelbase mm	2755	2755/2970	2970		
Vehicle length	L1	L1, L2	L2		
Vehicle height	H1	H1	H1		
Rear access	All	All	All		
Number of roof bars	2x	3x	4x		
Order ref.	35001138	35001139	35001140		

Model	Transit Custom	Transit Custom	Transit Custom		
Year of construction	2023	2023	2023		
Wheelbase mm	3100/3500	3100/3500	3100/3500		
Vehicle length	All	All	All		
Vehicle height	H1	H1	H2		
Rear access	All	All	All		
Number of roof bars	2x	3x	3x		
Order ref.	35001031	35001032	35001034*		

Model	Transit	Transit			
Year of construction	2014	2014			
Wheelbase mm	3300/3750/3750L	3750/3750L			
Vehicle length	All	L3/L4			
Vehicle height	H2/H3	H2/H3			
Rear access	Double doors	Double doors			
Number of roof bars	3x	4x			
Order ref.	35001069	35001070			

* When installing the roof rack on an H2 vehicle, the roof must be drilled. The max. load capacity is 75kg.

Roof rack systems

Load stops



- For fitting to a roof bar in a basic roof rack with 3 or 4 roof bars

Pack quantity (pieces)	2
Order ref.	35002034

Rear loading roller - suitable for basic roof racks



Model	Transit Connect	Transit Custom	Transit Custom		
Year of construction from	2022	2023	2023		
Wheelbase mm	2755/2970	3100/3500	3100/3500		
Vehicle length	L1, L2	All	All		
Vehicle height	H1	H1	H2		
Rear	Double doors	Double doors	Double doors		
Order ref.	35002061	35002065	35002073		

Model	Transit	Transit	Transit		
Year of construction from	2014	2014	2014		
Wheelbase mm	3300	3750	3750L		
Vehicle length	L2	L3	L4		
Vehicle height	H2, H3	H2, H3	H3		
Rear	Double doors	Double doors	Double doors		
Order ref.	35002071	35002069	35002071		

Roof rack systems

Aluminium storage tube for long items



- Lockable and puncture-resistant steel insert at both ends
- Max. load capacity: 50 kg
- Made of powder-coated aluminium

Version for	Pipes up to 3 m	Pipes up to 4 m	Pipes up to 5 m
Order ref.	35002050	35002051	35002052



„I have to reach new heights every day. Ladders are a piece of essential equipment for me. I can fasten them securely to the roof of my van. Bott's practical loading aid makes them easy to load and unload.“

Roof rack systems

Modular roof rack



Model	Transit Connect	Transit Connect	Transit Connect	Transit Connect	Transit Custom
Year of construction from	2022	2022	2022	2022	2023
Wheelbase mm	2755	2755	2970	2970	3100
Vehicle length	L1	L1	L2	L2	L1
Vehicle height	H1	H1	H1	H1	H1
Rear access	Double doors	Tailgate	Double doors	Tailgate	Double doors
Modular roof rack	1,25 x 2,2 m	1,25 x 2,0 m	1,25 x 2,4 m	1,25 x 2,2 m	1,40 x 3,2 m
Order ref.	35001136	35001137	35001141	35001142	35001035

Model	Transit Custom	Transit Custom	Transit Custom	Transit Custom	Transit Custom
Year of construction from	2023	2023	2023	2023	2023
Wheelbase mm	3100	3500	3500	3100	3500
Vehicle length	L1	L2	L2	L1	L2
Vehicle height	H1	H1	H1	H2	H2
Rear access	Tailgate	Double doors	Tailgate	Double doors	Double doors
Modular roof rack	1,40 x 2,8 m	1,40 x 3,2 m	1,40 x 3,0 m	1,25 x 2,0 m	1,25 x 2,4 m
Order ref.	35001036	35001037	35001038	35001039	35001040

Model	Transit	Transit	Transit	Transit	Transit
Year of construction from	2014	2014	2014	2014	2014
Wheelbase mm	3300	3300	3750	3750L	3750
Vehicle length	L2	L2	L3	L4	L3
Vehicle height	H2	H3	H3	H3	H2
Rear access	Double doors	Double doors	Double doors	Double doors	Double doors
Modular roof rack	1,60 x 3,0 m	1,60 x 2,8 m	1,60 x 3,2 m	1,60 x 4,0 m	1,60 x 3,2 m
Order ref.	35001071	35001072	35001074	35001075	35001073

* When installing the roof rack on an H2 vehicle, the roof must be drilled. The max. load capacity is 75kg.

Load restraint

Load restraint made easy

Safety for driver and load

Always legally compliant



Safe on the road

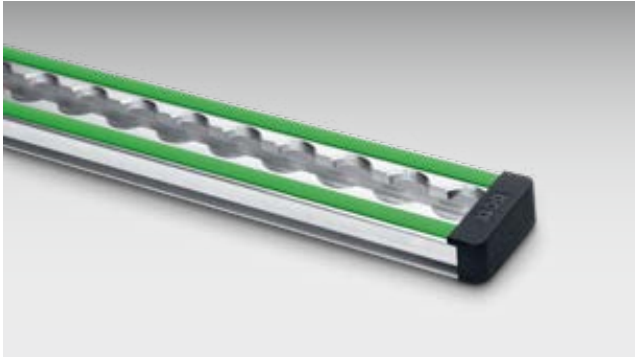
All system components of the bott vario3 in-vehicle equipment range offer innovative possibilities for simple load restraint. Therefore all material and equipment is safely stored, either with the tried-and-tested airline lashing rails or with our new C-Lash fixing, which enables particularly simple handling. C-Lash is so flexible that you can use minute adjustments to attach the lashing straps to our unique aluminium profiles.

That's how you can secure your load and equipment in any driving conditions, even when you're on bad roads. Within our wide product range you'll find the right type of load restraint for any application you could wish for.

Load restraint

Accessories to suit every requirement

Lashing rails with protective profile



- Contact surface with antiabrasion strips, ideal for transporting goods with sensitive surfaces
- For straps with fitting
- Width 46 mm
- Strap attachment points every 25 mm
- Load bearing capacity up to 500 daN (depending on the type of fixing)
- Includes end caps
- The green protective profile can be replaced by LED strips
- End cap lashing rail: 85001138.19V

Rail length [mm]	1000	1500	2000	3000	linear metre
Order ref.	67901014.98V	67901015.98V	67901016.98V	67901017.98V	67901018.98V

Load-securing case for vehicles with lashing rails



- Ideal for vehicles with bott vario3 in-vehicle equipment with integrated lashing points and/or lashing rails
- The use of lashing straps with fittings allows transported goods to be secured in a fast and reliable way using the lashing points or lashing rails of the vehicle
- Set consisting of:
 - 1x Systainer³ Organizer M 89
 - 2 x lashing strap 3.5 m with fitting and cam buckle
 - 2 x lashing strap 3.5 m with fitting and ratchet
 - 6x load restraint pad
 - 6x strap protection pad
- including important information on load restraint

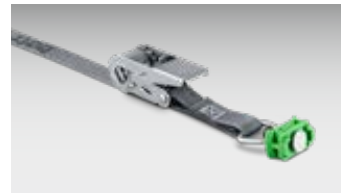
Dimensions W x D x H [mm]	396 x 296 x 89
Order ref.	72610038.19V

Load restraint

Ratchet strap with fitting



- bott branded strap in anthracite grey
- Suitable for lashing rails
- Strap width 25 mm



Strap length [mm]	1000	2500	3000	3500	5000	2500
Fixed end [mm]	130	130	130	500	500	500
Load capacity [daN]	500	500	400	500	500	500
Order ref.	62626005.19V	62626006.19V	62626069.19V	62626007.19V	62626008.19V	62626049.19V

Ratchet strap with fitting and cam-buckle

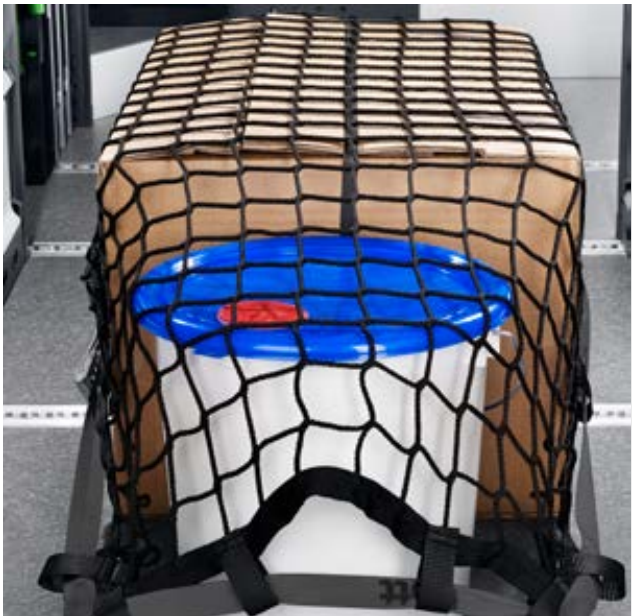


- bott branded strap in anthracite grey
- Suitable for lashing rails
- Strap width 25 mm

Strap length [mm]	1000	2500	2500	3500	5000
Fixed end [mm]	130	130	500	500	500
Load capacity [daN]	150	150	150	150	150
Order ref.	62626009.19V	62626010.19V	62626050.19V	62626011.19V	62626012.19V

Load restraint

Load-securing net



- Close-meshed knitted load-securing net
- Tested according to VDI 2700
- Mesh width 45 x 45 mm
- Load capacity up to 400 daN
- Cam-buckle strap around circumference

Version	4x hook	4x fitting	4x hook	4x fitting
Dimensions W x D [mm]	1250 x 730	1250 x 730	2290 x 1500	2290 x 1500
Order ref.	62627006.19V	62627007.19V	62627008.19V	62627009.19V

Load-restraint blanket



- For securing the load in the vehicle and on the flatbed
- Anti-theft protection thanks to the opaque fabric
- Tested according to VDI 2700
- Load capacity up to 300 daN
- Colour: anthracite grey

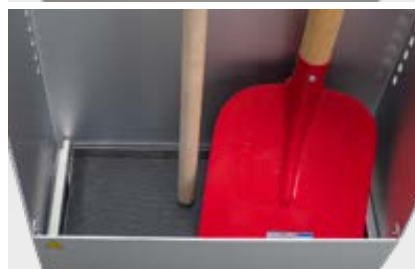
Version	4x cam buckle strap with flat hook ends	4x cam buckle strap with fitting	6x cam buckle strap with flat hook ends	6x cam buckle with fitting
Dimensions W x D [mm]	1250 x 730	1250 x 730	2290 x 1500	2290 x 1500
Order ref.	62627010.19V	62627011.19V	62627012.19V	62627013.19V

Load restraint

Shovel and tool holder for the rear doors



- For the clean secure storage of shovels and similar tools with handles
- Easy cleaning thanks to individually removable dirt catch pan
- Simple and fast load restraint thanks to C-Lash lashing strap
- Rear panel with perforated panel for attaching perfo hooks for fixing the tools
- incl. 10x perfo hooks (5x length 100 mm / 5x length 150 mm)
- incl. bracket for installation
- Material: anodised aluminium



Dimensions W x D x H [mm]

506 x 220 x 1545

Order ref.

73502065.97V

Load restraint

Snap fastener



- For fast and secure mounting of small and long parts
- Material: Zinc-plated steel
- Tensioning strap: Plastic, black

Dimensions W x D x H [mm]	150 x 40 x 40	150 x 40 x 40
Clamping range [mm]	16-32	33-47
Order ref.	63003041.51V	63003042.51V

Ladder holder, 3-piece



- 3-piece, for single and double ladders
- Attaches to vehicle roof spar by means of a central folding mechanism
- Colour: anthracite grey (RAL 7016)



Version	Suitable for use with ladder spars from 70 to 100 mm	Suitable for use with ladder spars from 130 to 160 mm
Dimensions W x D x H [mm]	46 x 300 x 130	46 x 300 x 130
Order ref.	63003083.19V	63003084.19V

Holder for plate compactor with lashing strap



- For the secure transportation of plate compactors in vans or on a flatbed
- Will accommodate a plate size of W x D: 280 x 330-350 mm
- Handle height is adjustable
- Incl. lashing strap



Dimensions W x D x H [mm]	315 x 560 x 930
Order ref.	07002234.19

Load restraint

Height-adjustable shoring pole



- Used to secure large items in transit
- Telescopic bar can be shortened or extended quickly without tools
- 4 different sizes available, each with a different adjustment range
- Guide value: Blocking capacity BC x 4 = max. permitted load weight for rear load restraint
- Starting from length 1550 mm with circumferential rubber coating, in the lower area, for increased slip-resistance as well as additional protection for the load



Shoring pole length [mm]	650-900	1050-1550	1550-2050	2000-2500
Blocking capacity BC [daN]	300	300	300	160
Order ref.	85001041	85001039	85001013	85001040



Load restraint

Shoring poles plus



- Used to secure large items in transit
- Telescopic bar can be shortened or extended quickly without tools
- Simple operation by means of Click Lock when inserting.
- Shoring pole is not spring loaded so there is never any clamping force applied to the roof or the side wall
- Suitable for horizontal and vertical applications
- Equal contact area across the entire length
- Continuous, uniform diameter of the clamping bar that always ensures flat contact surface with transported goods
- Circumferential rubber coating for increased slip-resistance as well as additional protection for the load.

Shoring pole length [mm]	650-800	800-1000	1000-1400	1400-2050	1700-2500
Blocking capacity BC [daN]	450-300	450-300	350-250	300-150	300-100
Order ref.	85001118	85001119	85001120	85001121	85001122

Shoring pole holder set



- For secure and spacesaving storage of 2 to 4 shoring poles
- Suitable for both versions of the shoring poles
- For mounting onto the lashing rails on the vehicle side wall or in the roof area
- Powder coated sheet steel
- Colour: anthracite grey (RAL 7016)

Version	for 2 shoring poles	for 4 shoring poles
Dimensions W x D x H [mm]	85 x 75 x 120	85 x 75 x 270
Order ref.	63003086.19	63003087.19

Load restraint

Load-securing mat



- For securing loaded goods
- Coefficient of friction in line with VDI guideline 2700 (DEKRA test certificate supplied)
- Flame resistant (fire class BflS1 in accordance with EN 13501)
- Antislip, dimensionally stable, tear resistant, durable, waterproof, oil and fat resistant, washable up to 60°C
- Colour: anthracite grey (RAL 7016)
- Optionally available with anodised aluminium storage pocket (114 x 114 x 500 mm)

Version	incl. holder	—	incl. holder	—
Dimensions W x D x H [mm]	620 x 820 x 5	620 x 820 x 5	1220 x 820 x 5	1220 x 820 x 5
Order ref.	61302001.19V	61302002.19V	61302003.19V	61302004.19V

Load restraining pad



- Load restraint kit for securing loaded goods
- Coefficient of friction in line with VDI guideline 2700 (DEKRA test certificate supplied)
- Flame resistant (fire class BflS1 in accordance with EN 13501)
- Antislip, dimensionally stable, tear resistant, durable, waterproof, oil and fat resistant, washable up to 60°C
- Colour: anthracite grey (RAL 7016)
- Optionally available with anodised aluminium storage pocket (160 x 45 x 160 mm)



Version	incl. holder	—
Pack quantity	6	6
Dimensions W x D x H [mm]	160 x 45 x 160	152 x 152 x 5
Order ref.	61302006.19V	61302007.19V

Load restraint

Hook



- Sturdy steel hook for universal installation in the vehicle or on the bott vario3 in-vehicle equipment
- Optimum protection of the stored goods and reduced noise development thanks to rubber-coated contact area
- Diameter of the screw holes: 6.5 mm

Version	Mount 37 mm	Mount 87 mm
Load capacity [kg]	15	10
Dimensions W x D x H [mm]	26 x 59 x 110	26 x 110 x 140
Order ref.	14001184.10V	14001185.10V

Single lashing point -oo- Construction

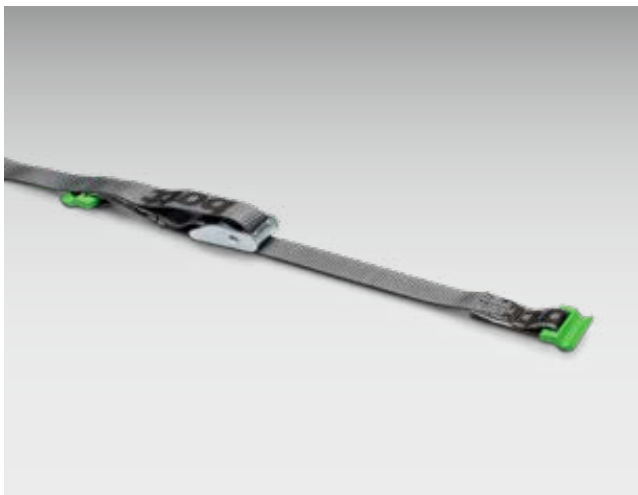


- makes quick and flexible load restraint possible
- for mounting on bott vario3 vehicle equipment, suitable for the T-slot on the bott vario3 end frame and various system components
- with Airline-hole patterns -oo- for lashing straps with fittings

Description	Single lashing point	Installation kit
Dimensions W x D x H [mm]	29 x 16 x 112	-
Order ref.	72610028.19V	73502076.51V

Load restraint

C-Lash Lashing strap



- makes quick and flexible load restraint possible
- For mounting on bott vario3 vehicle equipment, on the bott vario3 end frame
- Includes:
 - 1x lashing strap (-C-) with cam-buckle
 - 2x single lashing point (-C-) surface mounted
 - bott branded strap in anthracite grey
 - Strap width 25 mm

Version	Lashing strap C-Lash - surface mounted	Lashing strap C-Lash - surface mounted
Strap length [mm]	1000	2500
Fixed end [mm]	100	100
Load capacity [daN]	100	100
Order ref.	72610034.19V	72610035.19V

Version	Lashing strap C-Lash - mounted in T-slot	Lashing strap C-Lash - mounted in T-slot
Strap length [mm]	1000	2500
Fixed end [mm]	100	100
Load capacity [daN]	100	100
Order ref.	72610030.19V	72610031.19V

Version	Lashing strap C-Lash - mounted between end frames	Lashing strap C-Lash - mounted between end frames
Strap length [mm]	1000	2500
Fixed end [mm]	100	100
Load capacity [daN]	100	100
Order ref.	72610041.17V	72610042.17V

Version	Lashing strap with C-Lash and cam-buckle	Lashing strap with C-Lash and cam-buckle	Lashing strap with C-Lash and cam-buckle
Strap length [mm]	700	1000	2500
Fixed end [mm]	100	100	100
Load capacity [daN]	50	50	50
Order ref.	62626099.19V	62626095.19V	62626096.19V

Load restraint

Lashing strap with auto-wind



- For quick and easy load restraint
- Variant without fixed length strap end must be bolted to in-vehicle equipment module
- Black strap
- Strap width 25 mm
- Strap length 2000 mm

Version	Hook – Hook	Fitting – to be bolted on	Fitting – Fitting
Fixed end [mm]	200	–	200
Load capacity [daN]	125	125	125
Order ref.	62626062.90	62626061.90	62626065.90



Load restraint

Lashing eyes



- Sheet steel, zinc-plated
- Flush-fitting
- Including fixing kit

Version	Lashing eye	Lashing eye
Load capacity [daN]	350	800
Dimensions W x D x H [mm]	104 x 70 x 12	145 x 100 x 17
Order ref.	63003033.51V	63003034.51V

Accessories to suit every requirement



Load restraint

Ratchet strap with hook end



- bott branded strap in anthracite grey
- Universal hook for use with lashing eyes
- Strap width 25 mm

Strap length [mm]	3000	5000
Fixed end [mm]	130	500
Load capacity [daN]	400	650
Order ref.	62626067.19V	62626033.19V

Lashing straps with wide belt strap



- bott branded lashing strap in anthracite grey
- Strap width 50 mm

Version	Wire hook	Snap hook
Strap length [mm]	5000	5000
Fixed end [mm]	500	500
Load capacity [daN]	750	750
Order ref.	62626089.19	62626091.19

Load restraint

Strap with cam buckle



- bott branded strap in anthracite grey
- Strap width 25 mm

Strap length [mm]	1000	2500
Load capacity [daN]	300	300
Order ref.	62626037.19V	62626039.19V

Accessories to suit every requirement



Lashing straps with snap hook



- bott branded strap in anthracite grey
- Strap width 25 mm

Version	Ratchet	Ratchet	Ratchet
Strap length [mm]	2500	3500	5000
Fixed end [mm]	250	500	500
Load capacity [daN]	650	650	650
Order ref.	62626075.19	62626076.19	62626077.19

Version	Cam-buckle	Cam-buckle	Cam-buckle
Strap length [mm]	2500	3500	5000
Fixed end [mm]	250	500	500
Load capacity [daN]	150	150	150
Order ref.	62626081.19	62626082.19	62626083.19

Mobile workstation

Mobile office solutions

Always perfectly organised

Everything to hand



The mobile workshop

bott vario3 in-vehicle equipment offers a variety of possibilities for setting up your mobile workplace. With our solutions you can organise your equipment perfectly and have everything quickly to hand. Robust worktops in the service vehicle offer the perfect platform for a tradesman's activities.

bott vario3 offers a number of flexible possibilities for integrating a practical, robust workbench into your service vehicle. What's more, the folding and retractable worktops with vices will allow you to work effectively outside of the vehicle.



The mobile office

For dealing with paperwork, the bott vario CarOffice is an excellent choice. You can attach it to the passenger seat and store your documents neatly inside.

With the storage pockets, you have a clear view of your customer contracts and other documents. Small parts and pens can be housed in the large bottBox. There's also an option to integrate a pull-out writing surface in your bott vario3 in-vehicle equipment if you need it for your assignment.

Mobile workstation

Accessories to suit every requirement

Folding worktop



- For working with materials outside of the vehicle
- Cross-laminated beech plywood worktop, natural finish, multiple layered and laterally glued in layers with an oiled finish
- Suitable for vices with jaw width of up to 125 mm

Version	without vice	incl. vice with 125 mm jaw width	incl. turntable and vice with 125 mm jaw width
Dimensions W x D x H [mm]	125 x 285 x 895	220 x 285 x 895	240 x 285 x 895
Order ref.	71220042.19V	71220043.19V	71220044.19V

bott vario CarOffice



- Practical way to store office supplies
- Ensures order in the passenger seat
- With two holders for brochures, catalogues and other documents
- A storage box for small parts that can be quickly removed
- A folding, non-slip writing pad with magnetic holder and built-in cylinder holder
- Simple and secure mounting on the passenger seat with the seat belt and a variably adjustable headrest adapter



Dimensions W x D x H [mm]	340 x 520 x 690
Order ref.	63003098.19V

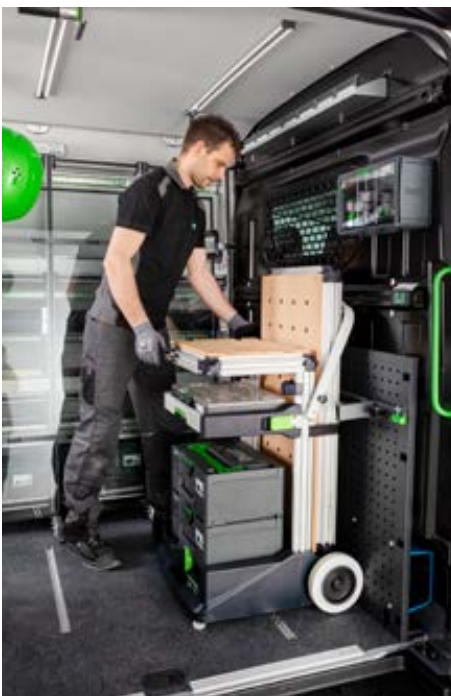
Mobile workstation

Mobile workshop with sliding shelf and multi-function table



- The ideal companion for mobile, semi-stationary work on the construction site
- Transport and mobile storage of systainers, hand tools and consumables
- Outstanding movement over steps thanks to large full-rubber and impact-resistant wheels (diameter: 200mm)
- Angle of push handle adjustable, sliding surfaces and integral handle on the shelf enable easy loading of the unit into a vehicle by a single person
- Effortless set-up and dismantling and compact dimensions
- Sturdy working area comprising perforated panel and aluminium profile offers flexible clamping and attachment options
- Dimensions of attached table: 1045 x 500 mm

Dimensions W x D x H [mm]	600 x 641 x 1185
Order ref.	72522042.90V



Accessories

Mobile workstation

Storing and
securing small parts

Always perfectly
organised



Accessories to suit every requirement

The following pages give some practical tips when working with your service vehicle. Your equipment is stowed away safely and the materials clearly organised in the bott vario3 in-vehicle equipment. You can work efficiently and reliably.

We can offer you numerous options for the storage of small parts and all kinds of equipment.

Our product range contains the right solution for almost every requirement. bott vario3 in-vehicle equipment really does offer a place for everything. Let us help you bring order and neatness into your daily routine.

Accessories

Accessories to suit every requirement

Gas cylinder set with strap



- For the safe transport of compressed gas canisters
- Strap length 1000mm
- Load capacity up to 500 daN



Version	with 1 lashing rail and 1 ratchet strap	with 1 lashing rail and 1 ratchet strap	with 1 lashing rail and 1 ratchet strap
For system depth [mm]	264	376	488
Dimensions W x D x H [mm]	21 x 264 x 46	21 x 376 x 46	21 x 488 x 46
Order ref.	72615001.19V	72615002.19V	72615003.19V

Version	with 2 lashing rails and 2 ratchet straps	with 2 lashing rails and 2 ratchet straps	with 2 lashing rails and 2 ratchet straps
For system depth [mm]	264	376	488
Dimensions W x D x H [mm]	21 x 264 x 46	21 x 376 x 46	21 x 488 x 46
Order ref.	72615004.19V	72615005.19V	72615006.19V

Version	With 1 support rail and 1 ratchet strap / for SLF-C	With 1 support rail and 1 ratchet strap / for SLF-C
For system depth [mm]	376	488
Dimensions W x D x H [mm]	21 x 376 x 46	21 x 488 x 46
Order ref.	72615007.19V	72615008.19V

Floor-mounted vent



- Provides floor -level ventilation when transporting compressed gas cylinders
- Plastic: anthracite
- Necessary cut-out Ø 89 mm
- Cut-out for cover on the wooden vehicle floor Ø 89 mm
- With DEKRA certificate



Version	Floor vent
Dimensions W x D x H [mm]	110 x 110 x 100
Order ref.	63502055.19V

Floor-mounted vent



- Provides floor -level ventilation when transporting compressed gas cylinders
- Sheet steel, galvanised
- With square section duct and water deflection plate
- Requires 130 x 130 mm cut-out

Dimensions W x D x H [mm]	164 x 164 x 80
Order ref.	08032021

Accessories

Accessories to suit every requirement

Roof- or side-mounted vent



- Provides roof or side ventilation when transporting compressed gas cylinders
- Plastic: black
- For cut-out Ø 54 mm
- Low-profile design means vehicle can still be cleaned in a car-wash
- Incl. fixing clip
- With DEKRA certificate



Version	Vent
Dimensions W x D x H [mm]	94 x 140 x 40
Order ref.	63502054.10V

Roof- or side-mounted vent



- Provides roof or side ventilation when transporting compressed gas cylinders
- Plastic: black
- Requires 76 x 216 mm cut-out
- Low-profile design means vehicle can still be cleaned in a car-wash

Dimensions W x D x H [mm]	205 x 355 x 50
Order ref.	80833215.10V

Gas cylinder cabinet



- ergonomic operation by air stopped shelf with full extension slide
- secure storage of the air stopper by integrated lashing rail (-oo-)
- storage and transport in accordance with regulations by ventilation opening in the cabinet base and circumferential door seal
- for installation in a system field of a bott vario3 in-vehicle equipment

Dimensions W x D x H [mm]	590 x 366 x 800
Order ref.	70001001.19V

Document holders



- Anodised aluminium
- For document storage or other equipment

Version	Long items	Long items	DIN first-aid kits	DIN A4 portrait	DIN A4 (angled)
From system depth [mm]	264	264	264	264	376
Dimensions W x D x H [mm]	114 x 114 x 500	76 x 76 x 500	175 x 93 x 230	215 x 85 x 275	256 x 300 x 300
Order ref.	62530004.97V	62530005.97V	62530003.97V	62530001.97V	62530006.97V

Accessories

Accessories to suit every requirement

Lashing strap bag



- Ideal for vehicles with bott vario3 van racking



Dimensions W x H [mm]	300 x 265
Order ref.	14014066

TiltBox



- Practical small parts tilt bin for simple installation on bott vario end frames and perforated panels
- Includes 1 divider
- The transparent insert can be removed
- Simple and secure operation thanks to central pushbutton
- An additional divider can be used to divide the TiltBox into three sections of approximately equal size
- Load capacity: 4 kg



Version	TiltBox	TiltBox	Additional TiltBox divider
Pack quantity	1	8	1
Dimensions W x D x H [mm]	304 x 147 x 196	304 x 147 x 196	3 x 106 x 171
Order ref.	14014060.19V	14014063.19V	14014065

Document holder



- A light plastic pocket for documents, brochures and small document folders
- DIN A4 landscape format
- Incl. labelling clip for colour coordination
- Hole pattern matched to the perfo hole grid in the bott vario3 end frames for quick installation without drilling

Version	DIN A4 landscape format
From system depth [mm]	376
Dimensions W x D x H [mm]	340 x 100 x 213
Order ref.	14014028.19



Accessories

Accessories to suit every requirement

Universal holder for safety helmets



- Universally adjustable for different sizes and shapes
- Optimised for installation on bott vario3 end frames or perforated panels
- Material: Anodised aluminium



Dimensions W x D x H [mm]

256 x 0 x 281

Order ref.

63003130.97

bott vario3 Cable winder



- Swivelling cable winder with automatic winding and cable 10 m long for convenient use in the vehicle
- For assembly on the side of the bott vario3 SLF



Version

Cable winder

From system depth [mm]

376

Dimensions W x D x H [mm]

400 x 165 x 300

Order ref.

73508026.19V

Accessories

bott vario3 spray can holder, angled

- suitable for bott vario3 vehicle equipment for mounting on the SLF
- Powder-coated sheet steel
- Colour: anthracite grey (RAL 7016)



Version	For cans up to max. ø 68 mm
Pack quantity	1
Dimensions W x D x H [mm]	100 x 230 x 159
Order ref.	72530003.19V

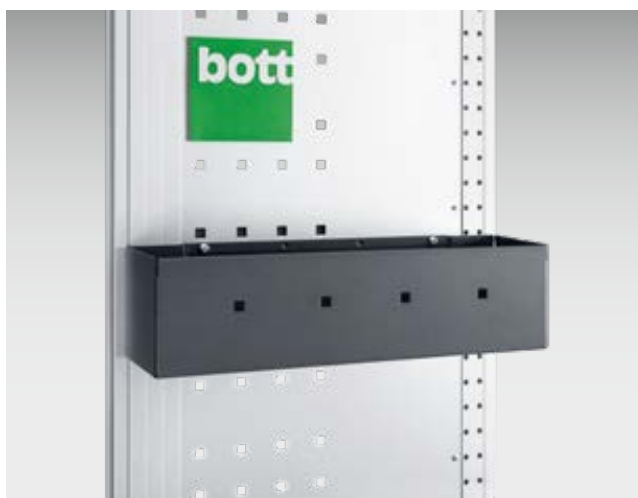
bott vario3 cartridge holder, angled

- suitable for bott vario3 vehicle equipment for mounting on the SLF
- Powder-coated sheet steel
- Colour: anthracite grey (RAL 7016)



Version	For cartridges up to max. ø 50 mm
Pack quantity	1
Dimensions W x D x H [mm]	100 x 230 x 159
Order ref.	72530002.19V

Storage box for end frames



- For the storing of small parts and required materials
- For installing on bott vario3 end frames
- Incl. Fixing kit
- Powder-coated sheet steel
- Colour: anthracite grey (RAL 7016)

For system depth [mm]	376	488
Dimensions W x D x H [mm]	100 x 376 x 100	100 x 488 x 100
Order ref.	73003002.19V	73003003.19V

Accessories

Storage pocket with 2 cones



- Anodised aluminium storage pocket with 2 cones
- For installing on bott vario3 end frames
- 2 cones with flashing and continuous light
- Cone dimension W x D x H: 280 x 280 x 500 mm
- Incl. storage bag



From system depth [mm]	376
Dimensions W x D x H [mm]	300 x 132 x 310
Order ref.	63003122.97V

Folding storage box



- Volume 30 litres
- Needs little space when folded up
- Assembled quickly thanks to Velcro closures
- Extremely stable thanks to integrated reinforced panels
- Watertight and resistant to many chemicals and oils
- Also ideal as an emergency measure in the event of an oil leak on construction, agricultural or forestry machinery or other leaks
- Storage pocket made of anodised aluminium for mounting on the bott vario3 end frame

Version	with storage pocket
From system depth [mm]	488
Dimensions W x D x H [mm]	437 x 43 x 600
Order ref.	72530021.97V

Case holder for Systainer³ Organizer and varioCase 84



- Painted steel sheet
- Colour: anthracite grey (RAL 7016)

Version	Case holder
From system depth [mm]	376
Dimensions W x D [mm]	100 x 371
Order ref.	72103032.19V

Box shelf with bottBoxes for vehicle bulkhead



- For mounting directly on the vehicle bulkhead or on a perforated panel
- Aluminium box tray
- Incl. 7x bottBox M1

Dimensions W x D x H [mm]	920 x 128 x 67
Order ref.	62533403.19V

Accessories

Spirit level holder



- For transporting long parts such as spirit levels or hydrant keys
- For mounting on bott vario3 shelves or long item top trays
- With hook and loop fasteners and fixing bolts
- Pack of 2
- Powder-coated sheet steel
- Colour: anthracite grey (RAL 7016)

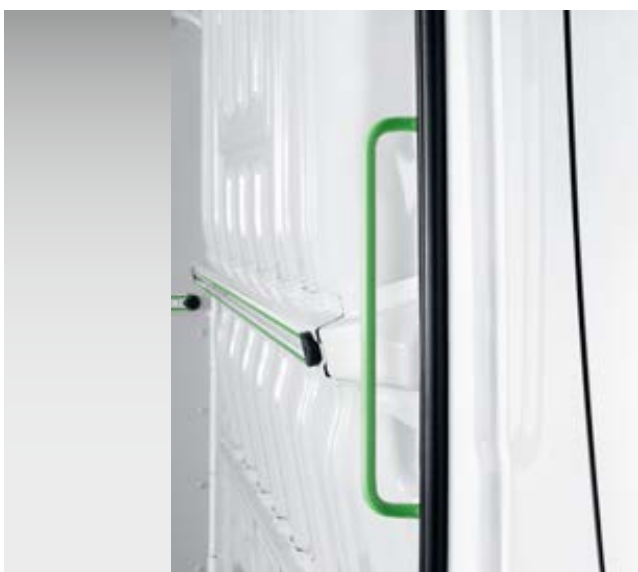
Dimensions W x D x H [mm]

94 x 32 x 58

Order ref.

73508001.19V

Handle



- For safe entry into the vehicle
- For installation inside side or rear doors
- Hole spacing 408 mm
- Colours: yellow-green (RAL 6018) anthracite grey (RAL 7016)

Version

yellow-green

anthracite grey

Dimensions W x D x H [mm]

40 x 75 x 435

40 x 75 x 435

Order ref.

80701007.17

80701007.19

Hose holder



- For storage of hoses and cables
- Made of die-cast aluminium

Version	Hose holder S	Hose holder M	Hose holder L	Hose holder X
From system depth [mm]	264	264	376	376
Dimensions W x D x H [mm]	190 x 70 x 145	265 x 105 x 200	350 x 145 x 255	415 x 190 x 305
Order ref.	14050001	14050002	14050003	14050004

Jerrycan compartment



- Suitable for 5 l plastic fuel cans or 10 l/20 l sheet steel fuel canisters
- For 5 l cans: made of anodised aluminium
- For 10 l and 20 l jerrycans: made of powder-coated sheet steel RAL 7016
- Incl. cam buckle strap with self-locking buckle for securing jerrycans while driving

Version	1x 5 l	1x 10 l / 20 l	3x 10 l / 20 l
Dimensions W x D x H [mm]	163 x 311 x 215	173 x 342 x 243	518 x 342 x 243
Order ref.	63003007.97V	63003008.19V	63003009.19V

Accessories

Sack truck



- Sturdy aluminium / plastic construction
- Transport platform approx. W 490 x D 270 mm
- Folding base & wheels / telescopic handle
- Incl. rubber strap to secure goods in place
- Max. load capacity = 125 kg

Dimensions W x D x H [mm]	490 x 60 x 755
Order ref.	63003026.90V

Sack truck holder



- Suitable for the bott sack truck
- For installing on vehicle bulkheads and bott vario3 end frames
- Fixing kit included
- Material: Sheet steel
- Colour: anthracite grey (RAL 7016)

Version	Sack truck holder
From system depth [mm]	488
Dimensions W x D x H [mm]	500 x 72 x 80
Order ref.	63502064.19V

Dolly



- For the fast and straightforward transport of several cases
- Suitable for all systainer³ M and L
- Optimum running and stability thanks to large wheels and wheel spacing
- Simple integration in bott vario3 in-vehicle equipment thanks to side mounts (width 5 / flat height 175mm)
- 4 swivel castors, front with 2x brake castors
- Wheel diameter: 100 mm
- Load capacity 100 kg
- Colour: anthracite grey



Description	Systainer ³ dolly
For case type	All systainer ³ M + L as well as systainer T-LOC
Dimensions W x D x H [mm]	508 x 397 x 160
Order ref.	72522029.19V

Holder for dolly



- For the fast, simple and safe storage of the Systainer³ skateboard
- Noise reduced by rubber buffers
- For installation at the side on the bott vario3 SLF frames or perfo perforated panels
- Material: powder-coated aluminium(RAL 7016)



Version	Holder for Systainer ³ dolly
From system depth [mm]	376
Dimensions W x D x H [mm]	290 x 66 x 439
Order ref.	73508025.19V

Accessories

Accessories to suit every requirement

Long-item top tray with sliding end-plate



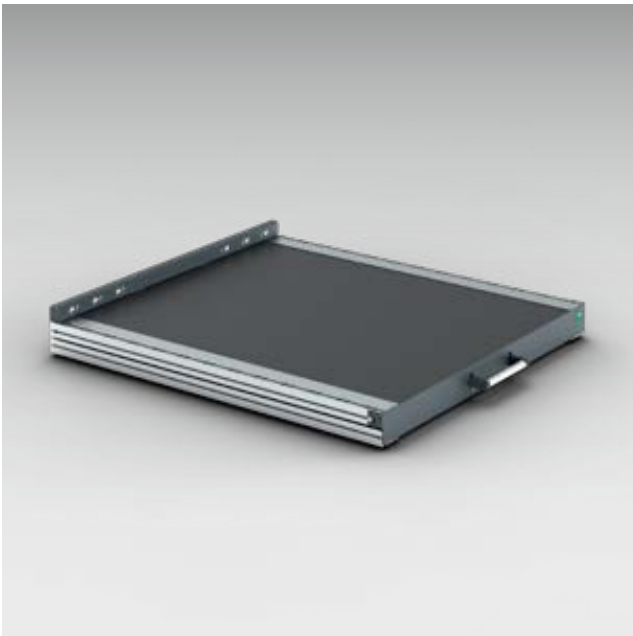
- For the storing and transporting of long items
- Convenient loading and unloading without entering the vehicle
- Can be combined with lashing strap C-Lash (-C-) with single point lashing (-C-) design for optimal load restraint
- Length is continuously adjustable
- Height: 100 mm
- Load capacity: 30 kg

max. number Single lashing point (-C-) installation	4	5	7	10
System depth [mm]	264	264	264	264
Dimensions W x D x H [mm]	2046 x 264 x 100	2158 x 264 x 100	2158 x 264 x 100	3614 x 264 x 100
Order ref.	72533172.97V	72533173.97V	72533174.97V	72533175.97V

max. number Single lashing point (-C-) installation	4	5	7
System depth [mm]	376	376	376
Dimensions W x D x H [mm]	2046 x 376 x 100	2158 x 376 x 100	2158 x 376 x 100
Order ref.	72533176.97V	72533177.97V	72533178.97V



Heavy duty sliding platforms with full extension slide



- Smooth-running heavy duty sliding platform with 200 kg loadcapacity
- Ergonomic access to the cargo via 100% full extension slide
- Can be locked when open, making easy loading and unloading of heavy and bulky objects possible
- Flexible load restraint thanks to lashing rails with airline profile integrated on both sides
- Simple and safe operation via to large ergonomic handle
- Sturdy structure made of lightweight aluminium and sturdy sheetsteel, with slip-resistant plastic panel
- Can be installed directly on the vehicle floor
- Height 101 mm

Width [mm]	492	492	492
Depth [mm]	716	940	1388
Dimensions of cargo area W x D [mm]	420 x 622	420 x 846	420 x 1294
Order ref.	71220021.19V	71220022.19V	71220023.19V

Width [mm]	716	716	716
Depth [mm]	716	940	1388
Dimensions of cargo area W x D [mm]	646 x 622	646 x 846	646 x 1294
Order ref.	71220024.19V	71220025.19V	71220026.19V

Width [mm]	940	940	940
Depth [mm]	716	940	1388
Dimensions of cargo area W x D [mm]	870 x 622	870 x 846	870 x 1294
Order ref.	71220027.19V	71220028.19V	71220029.19V

Width [mm]	1164	1164	1164
Depth [mm]	716	940	1388
Dimensions of cargo area W x D [mm]	1094 x 622	1094 x 846	1094 x 1294
Order ref.	71220030.19V	71220031.19V	71220032.19V

Drawer dividers

Dividers and cross dividers

Small parts storage boxes

Smallest parts
stowed away safely and
clearly organised



An end to constantly searching for what you need

Keep your parts and materials perfectly organised with bott vario3 storage drawers. They're a great way to organise all your tools and small parts and to store them safely. Everything is kept in its place in the load space, even in difficult driving conditions. Simply position the drawers where they are easiest to reach to keep your material handy. Our smooth running and robust drawers have a high load capacity and can hold up to 70 kilograms.

We offer numerous different options for dividing the drawer interior. Configure your drawers with dividers and cross dividers for well-organised storage. You could, of course, also use one of our small parts storage box divider kits. They offer the additional advantage that you can carry them and their contents to wherever you are working. A great way to keep everything handy. You can label the small parts storage boxes, so you'll always know what's inside them.

Drawer dividers



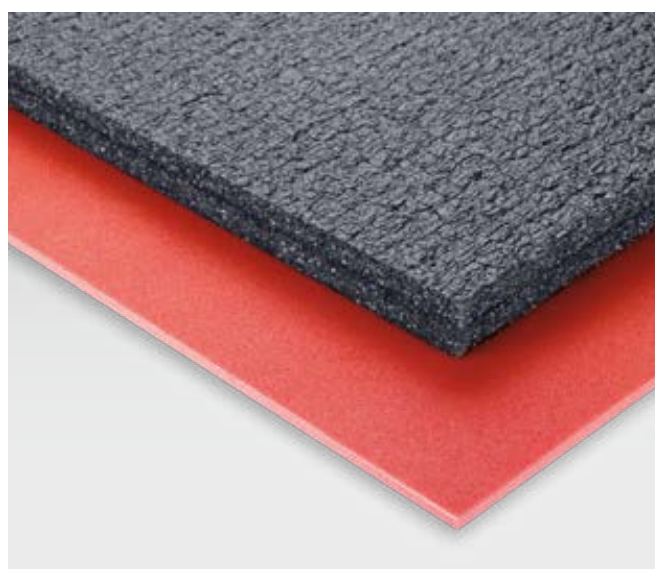
Dividers and cross dividers

- Predefined kits for all drawer sizes and front heights permit quick and easy subdivision of the drawer both front to back and left to right
- Dividers and cross-dividers give a clear overview and reduce search times
- Plastic divider holders prevent rattle and minimise noise
- All drawer divider components can be purchased individually - so custom configurations are also possible

Small parts storage boxes

- For the clear and orderly storage of small parts
- Predefined kits for all drawer sizes and front heights permit quick and easy subdivision of the drawer with small parts boxes of various sizes
- Rounded corners have been moulded into the base of the boxes so smaller parts are easy to remove.
- Suitable for both vario3 drawers with front heights of 100 mm, cubio drawers, Systainer³ Organizers and varioCase service cases
- All the boxes can be labelled easily with the optional label clip

Drawer dividers



Further solutions

- Foam inlays for hand tools
- Storage trays
- Trough blocks

Case Systems

Connects workshop,
service vehicle and
construction site

Perfectly integrated in the bott
vario3 in-vehicle equipment

Widely used
market standard



Systainer³ connects

With the practical and robust system case, you can neatly organise small parts and consumables. In the Systainer³ you can transport everything comfortably and safely to your place of work. Cases can be inserted like drawers into the in-vehicle equipment using guide rails. The same guide rails have been integrated into the bott workshop equipment range so your Systainer³ case can be stored in your workshop just as easily as your van.

The Systainer³ is a widely-distributed market standard that has been designed to fit perfectly into the bott vario3 in-vehicle equipment. Festool, Tanos and bott developed the mobility concept together in order to provide the perfect service case. The cases are stackable and can be connected. The front of the Systainer³ can be labelled in bank card format to show its contents.

Case Systems

Accessories



- A wide product offer and comprehensive range of accessories provide optimal solutions for any application
- Simple integration into bott vario3 in-vehicle equipment and bott workshop equipment thanks to integrated guide rails
- Promote efficient working through orderly and clear storage of tools, small parts and consumables
- Maximum mobility on the construction site and in use

- All cases are available in two widths and are optimally designed for use with the bott vario3 system widths
- Ideal in combination with the bott vario3 service case sliding shelf. The full extension slide allows efficient and unrestricted access to the contents of the case without having to remove the case from the in-vehicle equipment



Systainer³

- Practical and sturdy system case for the secure storage and transport of small parts and consumables
- Multifunctional T-LOC: close, open, connect - with just one twist
- 2 integrated label holders, one either side of the carry handle (bank card format)
- Can be stacked and linked to all other Systainer products
- Load bearing capacity (single): 20 kg
- Load bearing capacity (when connected): 40 kg



Systainer³ Organizer

- Transparent lid allows you to see the contents and minimises search times
- Multifunctional T-LOC: close, open, connect - with just one twist
- 2 integrated label holders, one either side of the carry handle (bank card format)
- Can be stacked and linked to many other Systainer products
- Load bearing capacity: 20 kg



bott varioCase

- High-quality service cases made from lightweight aluminium or robust sheet steel
- Versatile use due to comprehensive accessories
- Automatically locks when the lid is closed - preventing accidental spills
- Load bearing capacity: 20 kg

Systainer³ M case systems

Accessories



Systainer³ M case systems

Systainer³ M empty case for individual assembly



- Practical and sturdy system case for the safe and proper storage and transport of power tools, hand tools, small parts and consumables
- Simple integration in bott vario3 in-vehicle equipment and bott workshop equipment via integrated side mounts for guide rails
- Multifunctional T-LOC: close, open, connect - with just one twist
- 2 integrated label holders on the front of the case (bank card format)
- Can be stacked and linked to all other Systainer products
- Load bearing capacity (single): 20 kg
- Load bearing capacity (when connected): 40 kg
- Material: ABS



Description	Systainer ³ M 112	Systainer ³ M 137	Systainer ³ M 187
Version	Carry handle	Carry handle	Carry handle
Assembly	Empty	Empty	Empty
Dimensions W x D x H [mm]	396 x 296 x 112	396 x 296 x 137	396 x 296 x 187
Order ref.	72520003.19V	72520004.19V	72520005.19V



Description	Systainer ³ M 237	Systainer ³ M 337	Systainer ³ M 437
Version	Moulded finger grip	Moulded finger grip	Moulded finger grip
Assembly	Empty	Empty	Empty
Dimensions W x D x H [mm]	396 x 296 x 237	396 x 296 x 337	396 x 296 x 437
Order ref.	72520006.19V	72520007.19V	72520008.19V

Systainer³ M case systems

Systainer³ M 112 with universal inlay



- Practical and sturdy system case for the safe and proper storage and transport of small parts and consumables
- Equipped with universal inlay with 10 differently sized compartments and lid insert
- Simple integration in bott vario3 in-vehicle equipment and bott workshop equipment via integrated side mounts for guide rails
- Multifunctional T-LOC: close, open, connect - with just one twist
- 2 integrated label holders on the front of the case (bank card format)
- Can be stacked and linked to all other Systainer products
- Load bearing capacity (single): 20 kg
- Load bearing capacity (when connected): 40 kg
- Material: ABS

Description	Systainer ³ M 112
Version	Carry handle
Assembly	Universal inlay with 10 compartments
Dimensions W x D x H [mm]	396 x 296 x 112
Order ref.	72520027.19V



Systainer³ M case systems

Systainer³ M with compartment divider set



- Practical and sturdy system case for the safe and proper storage and transport of hand tools, small parts and consumables
- Equipped with compartment divider set for the division of the case into up to 6 equally sized compartments
- Simple integration in bott vario3 in-vehicle equipment and bott workshop equipment thanks to side mounts for guide rails
- Multifunctional T-LOC: close, open, connect - with just one twist
- 2 integrated label holders on the front of the case (bank card format)
- Can be stacked and linked to all other Systainer products
- Load bearing capacity (single): 20 kg
- Load bearing capacity (when connected): 40 kg
- Material: ABS



Description	Systainer ³ M 112	Systainer ³ M 137	Systainer ³ M 187	Systainer ³ M 237	Systainer ³ M 337	Systainer ³ M 437
Version	Carry handle	Carry handle	Carry handle	Moulded finger grip	Moulded finger grip	Moulded finger grip
Assembly	Compartment divider set Lid insert	Compartment divider set Lid insert	Compartment divider set Lid insert	Compartment divider set	Compartment divider set	Compartment divider set
Dimensions W x D x H [mm]	396 x 296 x 112	396 x 296 x 137	396 x 296 x 187	396 x 296 x 237	396 x 296 x 337	396 x 296 x 437
Weight [kg]	1.40	1.55	1.65	2.00	2.30	2.90
Order ref.	72520052.19V	72520053.19V	72520054.19V	72520047.19V	72520048.19V	72520049.19V

Systainer³ M case systems

Systainer³ M 187 with boxes



- Practical and sturdy system case for the safe and proper storage and transport of small parts and consumables
- Equipped with 2 removable box trays with small parts storage boxes
- incl. EPP lid insert
- Simple integration in bott vario3 in-vehicle equipment and bott workshop equipment thanks to side mounts for guide rails
- Multifunctional T-LOC: close, open, connect - with just one twist
- 2 integrated label holders on the front of the case (bank card format)
- Can be stacked and linked to all other Systainer products
- Load bearing capacity (single): 20 kg
- Load bearing capacity (when connected): 40 kg
- Case material: ABS
- Box tray material: powder-coated aluminium



Description	Systainer ³ M 187	Systainer ³ M 187	Systainer ³ M 187
Version	Carry handle	Carry handle	Carry handle
Assembly	18 boxes	25 boxes	32 boxes
Dimensions W x D x H [mm]	396 x 296 x 187	396 x 296 x 187	396 x 296 x 187
Order ref.	72520050.19V	72520058.19V	72520059.19V



Systainer³ M case systems

Systainer³ M with die-cut foam insert



- Practical and sturdy system case for the safe and proper storage and transport of hand tools, small parts and consumables
- Equipped with foam cushion, die-cut foam inserts (25mm pitch) and lid pad for designing individual inserts
- Simple integration in bott vario3 in-vehicle equipment and bott workshop equipment via integrated side mounts for guide rails
- Multifunctional T-LOC: close, open, connect - with just one twist
- 2 integrated label holders on the front of the case (bank card format)
- Can be stacked and linked to all other Systainer products
- Load bearing capacity (single): 20 kg
- Load bearing capacity (when connected): 40 kg
- Material: ABS



Description	Systainer ³ M 112	Systainer ³ M 137	Systainer ³ M 187
Version	Carry handle	Carry handle	Carry handle
Assembly	1x foam cushion 1x die-cut foam insert 1x lid pad	1x foam cushion 1x die-cut foam insert 1x lid pad	1x foam cushion 3x die-cut foam insert 1x lid pad
Dimensions W x D x H [mm]	396 x 296 x 112	396 x 296 x 137	396 x 296 x 187
Order ref.	72520038.19V	72520039.19V	72520040.19V



Description	Systainer ³ M 237	Systainer ³ M 337	Systainer ³ M 437
Version	Moulded finger grip	Moulded finger grip	Moulded finger grip
Assembly	1x foam cushion 5x die-cut foam insert 1x lid pad	1x foam cushion 5x die-cut foam insert 1x lid pad	1x foam cushion 5x die-cut foam insert 1x lid pad
Dimensions W x D x H [mm]	396 x 296 x 237	396 x 296 x 337	396 x 296 x 437
Order ref.	72520041.19V	72520042.19V	72520043.19V

Systainer³ M case systems

Systainer³ M with spray can insert



- Practical and sturdy system case for the safe and proper storage and transport of spray cans
- Equipped with spray can insert made of EPP for 14 cans with max. diameter 69 mm
- Simple integration in bott vario3 in-vehicle equipment and bott workshop equipment via integrated side mounts for guide rails
- Multifunctional T-LOC: close, open, connect - with just one twist
- 2 integrated label holders on the front of the case (bank card format)
- Can be stacked and linked to all other Systainer products
- Load bearing capacity (single): 20 kg
- Load bearing capacity (when connected): 40 kg
- Material: ABS



Description	Systainer ³ M 337	Systainer ³ M 437
Version	Moulded finger grip	Moulded finger grip
Assembly	Spray can insert	Spray can insert
Dimensions W x D x H [mm]	396 x 296 x 337	396 x 296 x 437
Order ref.	72520029.19V	72520030.19V

Systainer³ M case systems

Systainer³ M with cartridge storage insert



- Practical and sturdy system case for the safe and proper storage and transport of cartridges
- Equipped with cartridge storage insert made of EPP for 22 cartridges with max. diameter 51 mm and 15 cartridge nozzles
- Simple integration in bott vario3 in-vehicle equipment and bott workshop equipment via integrated side mounts for guide rails
- Multifunctional T-LOC: close, open, connect - with just one twist
- 2 integrated label holders on the front of the case (bank card format)
- Can be stacked and linked to all other Systainer products
- Load bearing capacity (single): 20 kg
- Load bearing capacity (when connected): 40 kg
- Material: ABS



Description	Systainer ³ M 337	Systainer ³ M 437
Version	Moulded finger grip	Moulded finger grip
Assembly	Cartridge storage insert	Cartridge storage insert
Dimensions W x D x H [mm]	396 x 296 x 337	396 x 296 x 437
Order ref.	72520031.19V	72520032.19V

Systainer³ M case systems

Systainer³ M with suspension frame



- Practical and sturdy system case for the safe and proper storage and transport of suspended files
- Equipped with suspension frame for suspended files and folders in accordance with DIN 821
- Incl. lid bag for office supplies
- Simple integration in bott vario3 in-vehicle equipment and bott workshop equipment thanks to side mounts for guide rails
- Multifunctional T-LOC: close, open, connect - with just one twist
- 2 integrated label holders on the front of the case (bank card format)
- Can be stacked and linked to all other Systainer products
- Load bearing capacity (single): 20 kg
- Load bearing capacity (when connected): 40 kg
- Material: ABS

Description	Systainer ³ M 337
Version	Pull-out aid
Assembly	Suspension frame + lid bag
Dimensions W x D x H [mm]	396 x 296 x 337
Order ref.	72520036.19V



Systainer³ L empty case for custom configuration



- Practical and sturdy system case for the safe and proper storage and transport of power tools, hand tools, small parts and consumables
- Simple integration in bott vario3 in-vehicle equipment and bott workshop equipment via integrated side mounts for guide rails
- Multifunctional T-LOC: close, open, connect - with just one twist
- 2 integrated label holders on the front of the case (bank card format)
- Can be stacked and linked to all other Systainer products
- Load bearing capacity (single): 20 kg
- Load bearing capacity (when connected): 40 kg
- Material: ABS



Description	Systainer ³ L 137	Systainer ³ L 187	Systainer ³ L 237
Version	Carry handle	Carry handle	Moulded finger grip
Assembly	Empty	Empty	Empty
Dimensions W x D x H [mm]	508 x 296 x 137	508 x 296 x 187	508 x 296 x 237
Order ref.	72520009.19V	72520010.19V	72520011.19V

Systainer³ L case systems

Systainer³ L 137 with universal insert



- Practical and sturdy system case for the safe and proper storage and transport of small parts and consumables
- Equipped with universal insert with 6 differently sized compartments and lid insert
- Simple integration in both vario3 in-vehicle equipment and both workshop equipment via integrated side mounts for guide rails
- Multifunctional T-LOC: close, open, connect - with just one twist
- 2 integrated label holders on the front of the case (bank card format)
- Can be stacked and linked to many other Systainer products
- Load bearing capacity (single): 20 kg
- Load bearing capacity (when connected): 40 kg
- Material: ABS

Description	Systainer ³ L 137
Version	Carry handle
Assembly	Universal insert with 6 compartments
Dimensions W x D x H [mm]	508 x 296 x 137
Order ref.	72520028.19V



Systainer³ L case systems

Systainer³ L with compartment divider set



- Practical and sturdy system case for the safe and proper storage and transport of hand tools, small parts and consumables
- Equipped with compartment divider set for the division of the case into up to 6 equally sized compartments
- Simple integration in bott vario3 in-vehicle equipment and bott workshop equipment thanks to side mounts for guide rails
- Multifunctional T-LOC: close, open, connect - with just one twist
- 2 integrated label holders on the front of the case (bank card format)
- Can be stacked and linked to many other Systainer products
- Load bearing capacity (single): 20 kg
- Load bearing capacity (when connected): 40 kg
- Material: ABS



Description	Systainer ³ L 137	Systainer ³ L 187	Systainer ³ L 237
Version	Carry handle	Carry handle	Moulded finger grip
Assembly	Compartment divider set Lid insert	Compartment divider set Lid insert	Compartment divider set
Dimensions W x D x H [mm]	508 x 296 x 137	508 x 296 x 187	508 x 296 x 237
Weight [kg]	1.75	2.00	2.20
Order ref.	72520055.19V	72520056.19V	72520057.19V



Systainer³ L case systems

Systainer³ L 187 with boxes



- Practical and sturdy system case for the safe and proper storage and transport of small parts and consumables
- Equipped with 2 removable box trays with small parts storage boxes
- incl. EPP lid insert
- Simple integration in bott vario3 in-vehicle equipment and bott workshop equipment thanks to side mounts for guide rails
- Multifunctional T-LOC: close, open, connect - with just one twist
- 2 integrated label holders on the front of the case (bank card format)
- Can be stacked and linked to many other Systainer products
- Load bearing capacity (single): 20 kg
- Load bearing capacity (when connected): 40 kg
- Case material: ABS
- Box tray material: powder-coated aluminium



Description	Systainer ³ L 187	Systainer ³ L 187	Systainer ³ L 187
Version	Carry handle	Carry handle	Carry handle
Assembly	20 boxes	29 boxes	38 boxes
Dimensions W x D x H [mm]	508 x 296 x 187	508 x 296 x 187	508 x 296 x 187
Order ref.	72520051.19V	72520060.19V	72520061.19V



Systainer³ L case systems

Systainer³ L with die-cut foam insert



- Practical and sturdy system case for the safe and proper storage and transport of hand tools, small parts and consumables
- Equipped with foam cushion, die-cut foam inserts (25mm pitch) and lid pad for designing individual inserts
- Simple integration in bott vario3 in-vehicle equipment and bott workshop equipment via integrated side mounts for guide rails
- Multifunctional T-LOC: close, open, connect - with just one twist
- 2 integrated label holders on the front of the case (bank card format)
- Can be stacked and linked to many other Systainer products
- Load bearing capacity (single): 20 kg
- Load bearing capacity (when connected): 40 kg
- Material: ABS



Description	Systainer ³ L 137	Systainer ³ L 187	Systainer ³ L 237
Version	Carry handle	Carry handle	Moulded finger grip
Assembly	1x foam cushion 1x die-cut foam insert 1x lid pad	1x foam cushion 3x die-cut foam insert 1x lid pad	1x foam cushion 5x die-cut foam insert 1x lid pad
Dimensions W x D x H [mm]	508 x 296 x 137	508 x 296 x 187	508 x 296 x 237
Order ref.	72520044.19V	72520045.19V	72520046.19V

Systainer³ L case systems

Systainer³ L with tool insert



- Practical and sturdy system case for the safe and proper storage and transport of hand tools
- Equipped with tool insert and lid insert / lid bag
- The tool required can be found quickly thanks to the clear storage of the hand tools required
- Simple integration in bott vario3 in-vehicle equipment and bott workshop equipment thanks to side mounts for guide rails
- T-LOC as central operating element: close, open, connection with just one twist
- Marking possibility thanks to 2 slot card compartments in standard bank card format on the front
- Can be stacked and linked to many other Systainer products
- Load bearing capacity (single): 20 kg
- Load bearing capacity (when connected): 40 kg
- Material: ABS



Description	Systainer ³ L 187	Systainer ³ L 237
Version	Carry handle	Pull-out aid
Assembly	Tool insert and lid bag	Tool insert and lid bag
Dimensions W x D x H [mm]	508 x 296 x 187	508 x 296 x 237
Order ref.	72520034.19V	72520035.19V



Systainer³ Organizer M + L case systems

Systainer³ Organizer empty case for individual assembly



- Practical and sturdy system case for the safe and proper storage and transport of small parts and consumables
- Transparent lid allows you to see the contents and minimises search times
- Simple integration in bott vario3 in-vehicle equipment and bott workshop equipment via integrated side mounts for guide rails
- Multifunctional T-LOC: close, open, connect - with just one twist
- 2 integrated label holders on the front of the case (bank card format)
- Can be stacked and linked to many other Systainer products
- Load capacity: 20 kg



Description	Systainer ³ Organizer M 89	Systainer ³ Organizer L 89
Assembly	Empty	Empty
Dimensions W x D x H [mm]	396 x 296 x 89	508 x 296 x 89
Order ref.	72520001.19V	72520002.19V



Systainer³ Organizer M + L case systems

Systainer³ Organizer with small parts storage boxes



- Practical and sturdy system case for the safe and proper storage and transport of small parts and consumables
- Equipped with small parts storage boxes
- Transparent lid allows you to see the contents and minimises search times
- Simple integration in both vario3 in-vehicle equipment and both workshop equipment via integrated side mounts for guide rails
- Multifunctional T-LOC: close, open, connect - with just one twist
- 2 integrated label holders on the front of the case (bank card format)
- Can be stacked and linked to many other Systainer products
- Load capacity: 20 kg



Description	Systainer ³ Organizer M 89	Systainer ³ Organizer M 89	Systainer ³ Organizer M 89
Assembly	12 boxes	18 boxes	28 boxes
Dimensions W x D x H [mm]	396 x 296 x 89	396 x 296 x 89	396 x 296 x 89
Order ref.	72520021.19V	72520022.19V	72520023.19V



Description	Systainer ³ Organizer L 89	Systainer ³ Organizer L 89	Systainer ³ Organizer L 89
Assembly	13 boxes	20 boxes	33 boxes
Dimensions W x D x H [mm]	508 x 296 x 89	508 x 296 x 89	508 x 296 x 89
Order ref.	72520024.19V	72520025.19V	72520026.19V

Systainer³ ToolBox M + L case systems

Systainer³ ToolBox



- Practical and sturdy carry box for the safe and proper storage and transport of machines, hand tools, small parts and consumables
- No restriction of the storage space by a lid, therefore also suitable for transporting bulky goods
- Simple integration in bott vario3 in-vehicle equipment and bott workshop equipment thanks to side mounting frames for guide rails
- T-LOC as central operating element: close, open, connect with just one twist
- Marking possibility thanks to 2 slot card compartments in standard bank card format on the front
- Can be stacked and linked to all other Systainer products
- Load bearing capacity (single): 20 kg
- Load bearing capacity (when connected): 40 kg
- Material: ABS



Description	Systainer ³ ToolBox M 137	Systainer ³ ToolBox M 187	Systainer ³ ToolBox M 237
Assembly	Empty	Empty	Empty
Dimensions W x D x H [mm]	396 x 296 x 137	396 x 296 x 187	396 x 296 x 237
Order ref.	72520063.19V	72520064.19V	72520065.19V



Description	Systainer ³ ToolBox L 137	Systainer ³ ToolBox L 187	Systainer ³ ToolBox L 237
Assembly	Empty	Empty	Empty
Dimensions W x D x H [mm]	508 x 296 x 137	508 x 296 x 187	508 x 296 x 237
Order ref.	72520068.19V	72520069.19V	72520070.19V

Accessories for Systainer³ case systems

Dolly

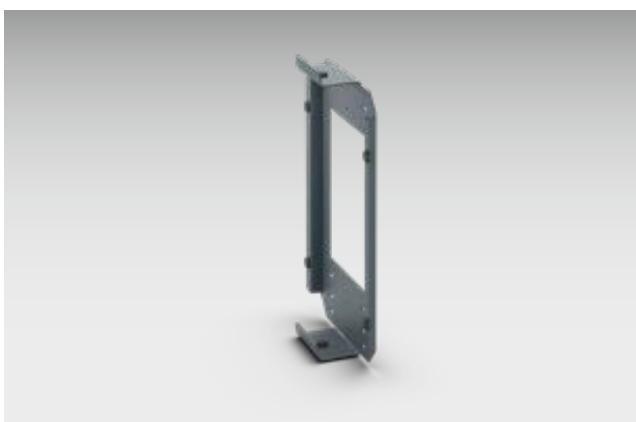


- For the fast and straightforward transport of several cases
- Suitable for all systainer³ M and L
- Optimum running and stability thanks to large wheels and wheel spacing
- Simple integration in bott vario3 in-vehicle equipment thanks to side mounts (width 5 / flat height 175mm)
- 4 swivel castors, front with 2x brake castors
- Wheel diameter: 100 mm
- Load capacity 100 kg
- Colour: anthracite grey



Description	Systainer ³ dolly
For case type	All systainer ³ M + L as well as systainer T-LOC
Dimensions W x D x H [mm]	508 x 397 x 160
Order ref.	72522029.19V

Holder for dolly



- For the fast, simple and safe storage of the Systainer³ skateboard
- Noise reduced by rubber buffers
- For installation at the side on the bott vario3 SLF frames or perforated panels
- Material: powder-coated aluminium(RAL 7016)



Version	Holder for Systainer ³ dolly
From system depth [mm]	376
Dimensions W x D x H [mm]	290 x 66 x 439
Order ref.	73508025.19V

Accessories for Systainer³ case systems

Transport trolley with drawer



- Practical transport trolley for the convenient transport of systainer system cases
- Simple movement over steps thanks to large wheels
- Integrated drawer for stowing small parts (load capacity 5 kg)
- With adjustable safety strap
- Dolly and sack truck function
- Suitable for all cases with basic dimensions 400 x 300 mm
- Wheel diameter front: 75 mm
- Wheel diameter rear: 200 mm
- Load capacity 100 kg

Description	Transport trolley with drawer
For case type	All systainer ³ M as well as systainer T-LOC
Dimensions W x D x H [mm]	600 x 440 x 1100
Order ref.	72522030.90V



Accessories for Systainer³ case systems

Labelling kit



- For the clean and orderly labelling of the cases
- Reduces search times and increases efficiency
- Suitable for all systainer³ M and L
- For insertion into the two pockets on the front of the case
- Comprising 20 transparent cards and 2 labelling sheets with 10 paper cards each for tearing off

Description	Labelling kit
For case type	All systainer ³ M + L as well as systainer T-LOC
Dimensions W x D x H [mm]	86 x 1 x 54
Order ref.	72522038



Accessories for Systainer³ case systems



varioCase M case systems

varioCase M empty



- Lightweight and high-quality service case for customised configuration
- Simple integration in both vario3 in-vehicle equipment and both workshop equipment via integrated side mounts for guide rails
- Lid automatically locks when closed preventing accidental spills
- Load capacity: 20 kg
- Material: anodised aluminium



Description	varioCase M 84	varioCase M 135
Assembly	Empty	Empty
Dimensions W x D x H [mm]	396 x 337 x 84	396 x 337 x 135
Order ref.	72511001.97V	72511003.97V

varioCase M empty



- Sturdy and high-quality service case for customised configuration
- Simple integration in both vario3 in-vehicle equipment and both workshop equipment via integrated side mounts for guide rails
- Lid automatically locks when closed preventing accidental spills
- Load capacity: 20 kg
- Material: powder coated sheet steel
- Colour: anthracite grey (RAL 7016)



Description	varioCase M 84	varioCase M 135
Assembly	Empty	Empty
Dimensions W x D x H [mm]	396 x 337 x 84	396 x 337 x 135
Order ref.	72511005.19V	72511007.19V

varioCase M case systems

varioCase M with dividers and cross dividers



- Lightweight and high-quality service case equipped with dividers and cross dividers
- For the tidy and clear storage of tools and consumables
- Simple integration in bott vario3 in-vehicle equipment and bott workshop equipment via integrated side mounts for guide rails
- Lid automatically locks when closed preventing accidental spills
- Load capacity: 20 kg
- Material: anodised aluminium



Description	varioCase M 84	varioCase M 135
Assembly	2x divider / 5x cross divider	2x divider / 5x cross divider
Dimensions W x D x H [mm]	396 x 337 x 84	396 x 337 x 135
Order ref.	72511013.97V	72511015.97V

varioCase M with dividers and cross dividers



- Sturdy and high-quality service case equipped with dividers and cross dividers
- For the tidy and clear storage of tools and consumables
- Simple integration in bott vario3 in-vehicle equipment and bott workshop equipment via integrated side mounts for guide rails
- Lid automatically locks when closed preventing accidental spills
- Load capacity: 20 kg
- Material: powder coated sheet steel
- Colour: anthracite grey (RAL 7016)



Description	varioCase M 84	varioCase M 135
Assembly	2x divider / 5x cross divider	2x divider / 5x cross divider
Dimensions W x D x H [mm]	396 x 337 x 84	396 x 337 x 135
Order ref.	72511014.19V	72511016.19V

varioCase M case systems

varioCase M 84 with assortments of boxes



- Lightweight and high-quality service case equipped with small parts storage boxes
- For the tidy and clear storage of small parts and consumables
- Simple integration in both vario3 in-vehicle equipment and both workshop equipment via integrated side mounts for guide rails
- Lid automatically locks when closed preventing accidental spills
- Load capacity: 20 kg
- Material: anodised aluminium



Description	varioCase M 84	varioCase M 84	varioCase M 84	varioCase M 84
Assembly	11 boxes	17 boxes	24 boxes	32 boxes
Dimensions W x D x H [mm]	396 x 337 x 84	396 x 337 x 84	396 x 337 x 84	396 x 337 x 84
Order ref.	72511017.97V	72511018.97V	72511020.97V	72511021.97V

varioCase M 84 with assortments of boxes



- Sturdy and high-quality service case equipped with small parts storage boxes
- For the tidy and clear storage of small parts and consumables
- Simple integration in both vario3 in-vehicle equipment and both workshop equipment via integrated side mounts for guide rails
- Lid automatically locks when closed preventing accidental spills
- Load capacity: 20 kg
- Material: powder coated sheet steel
- Colour: anthracite grey (RAL 7016)

Description	varioCase M 84
Assembly	17 boxes
Dimensions W x D x H [mm]	396 x 337 x 84
Order ref.	72511019.19V

varioCase M case systems

varioCase M 135 with assortments of boxes



- Lightweight and high-quality service case equipped with small parts storage boxes
- For the tidy and clear storage of small parts and consumables
- Ample storage space via integrated second storage level with box tray
- Simple integration in bott vario3 in-vehicle equipment and bott workshop equipment via integrated side mounts for guide rails
- Lid automatically locks when closed preventing accidental spills
- Load capacity: 20 kg
- Material: anodised aluminium

Description	varioCase M 135
Assembly	33 boxes with box tray
Dimensions W x D x H [mm]	396 x 337 x 135
Order ref.	72511022.97V

varioCase M 84 with nozzle insert



- Lightweight and high-quality service case equipped with nozzle insert and small parts storage boxes
- For the safe and clear storage of torch nozzles
- Simple integration in bott vario3 in-vehicle equipment and bott workshop equipment via integrated side mounts for guide rails
- Lid automatically locks when closed preventing accidental spills
- Load capacity: 20 kg
- Material: anodised aluminium

Description	varioCase M 84
Assembly	Nozzle insert and 2 small parts storage boxes
Dimensions W x D x H [mm]	396 x 337 x 84
Order ref.	72511029.97V

varioCase L case systems

varioCase L empty



- Lightweight and high-quality service case for customised configuration
- Simple integration in both vario3 in-vehicle equipment and both workshop equipment via integrated side mounts for guide rails
- Lid automatically locks when closed preventing accidental spills
- Load capacity: 20 kg
- Material: anodised aluminium



Description	varioCase L 84	varioCase L 135
Assembly	Empty	Empty
Dimensions W x D x H [mm]	508 x 337 x 84	508 x 337 x 135
Order ref.	72511002.97V	72511004.97V

varioCase L empty



- Sturdy and high-quality service case for customised configuration
- Simple integration in both vario3 in-vehicle equipment and both workshop equipment via integrated side mounts for guide rails
- Lid automatically locks when closed preventing accidental spills
- Load capacity: 20 kg
- Material: powder coated sheet steel
- Colour: anthracite grey (RAL 7016)



Description	varioCase L 84	varioCase L 135
Assembly	Empty	Empty
Dimensions W x D x H [mm]	508 x 337 x 84	508 x 337 x 135
Order ref.	72511006.19V	72511008.19V

varioCase L case systems

varioCase L with dividers and cross dividers



- Lightweight and high-quality service case equipped with dividers and cross dividers
- For the tidy and clear storage of tools and consumables
- Simple integration in bott vario3 in-vehicle equipment and bott workshop equipment via integrated side mounts for guide rails
- Lid automatically locks when closed preventing accidental spills
- Load capacity: 20 kg
- Material: anodised aluminium



Description	varioCase L 84	varioCase L 135
Assembly	3x divider / 6x cross divider	3x divider / 6x cross divider
Dimensions W x D x H [mm]	508 x 337 x 84	508 x 337 x 135
Order ref.	72511009.97V	72511011.97V

varioCase L with dividers and cross dividers



- Sturdy and high-quality service case equipped with dividers and cross dividers
- For the tidy and clear storage of tools and consumables
- Simple integration in bott vario3 in-vehicle equipment and bott workshop equipment via integrated side mounts for guide rails
- Lid automatically locks when closed preventing accidental spills
- Load capacity: 20 kg
- Material: powder coated sheet steel
- Colour: anthracite grey (RAL 7016)



Description	varioCase L 84	varioCase L 135
Assembly	3x divider / 6x cross divider	3x divider / 6x cross divider
Dimensions W x D x H [mm]	508 x 337 x 84	508 x 337 x 135
Order ref.	72511010.19V	72511012.19V

varioCase L case systems

varioCase L 84 with assortments of boxes



- Lightweight and high-quality service case equipped with small parts storage boxes
- For the tidy and clear storage of small parts and consumables
- Simple integration in both vario3 in-vehicle equipment and both workshop equipment via integrated side mounts for guide rails
- Lid automatically locks when closed preventing accidental spills
- Load capacity: 20 kg
- Material: anodised aluminium



Description	varioCase L 84	varioCase L 84	varioCase L 84	varioCase L 84
Assembly	12 boxes and tool compartment	17 boxes and tool compartment	24 boxes and tool compartment	32 boxes and tool compartment
Dimensions W x D x H [mm]	508 x 337 x 84	508 x 337 x 84	508 x 337 x 84	508 x 337 x 84
Order ref.	72511023.97V	72511024.97V	72511026.97V	72511027.97V

varioCase L 84 with assortments of boxes



- Sturdy and high-quality service case equipped with small parts storage boxes
- For the tidy and clear storage of small parts and consumables
- Simple integration in both vario3 in-vehicle equipment and both workshop equipment via integrated side mounts for guide rails
- Lid automatically locks when closed preventing accidental spills
- Load capacity: 20 kg
- Material: powder coated sheet steel
- Colour: anthracite grey (RAL 7016)

Description	varioCase L 84
Assembly	17 boxes and tool compartment
Dimensions W x D x H [mm]	508 x 337 x 84
Order ref.	72511025.19V

varioCase L case systems

varioCase L 135 with assortments of boxes



- Lightweight and high-quality service case equipped with small parts storage boxes
- For the tidy and clear storage of small parts and consumables
- Ample storage space thanks to second storage level with box tray
- Simple integration in bott vario3 in-vehicle equipment and bott workshop equipment via integrated side mounts for guide rails
- Lid automatically locks when closed preventing accidental spills
- Load capacity: 20 kg
- Material: anodised aluminium

Description	varioCase L 135
Assembly	34 boxes with box tray and tool compartment
Dimensions W x D x H [mm]	508 x 337 x 135
Order ref.	72511028.97V

varioCase L 84 with nozzle insert



- Lightweight and high-quality service case equipped with nozzle insert and small parts storage boxes
- For the safe and clear storage of oil burner nozzles
- Simple integration in bott vario3 in-vehicle equipment and bott workshop equipment via integrated side mounts for guide rails
- Lid automatically locks when closed preventing accidental spills
- Load capacity: 20 kg
- Material: anodised aluminium

Description	varioCase L 84
Assembly	Nozzle insert, 2 small parts storage boxes and tool compartment
Dimensions W x D x H [mm]	508 x 337 x 84
Order ref.	72511030.97V

perfo

Tidy workplace

Quick access to tools and
small parts

One system - the original



Tidy workplace, tidy mind.

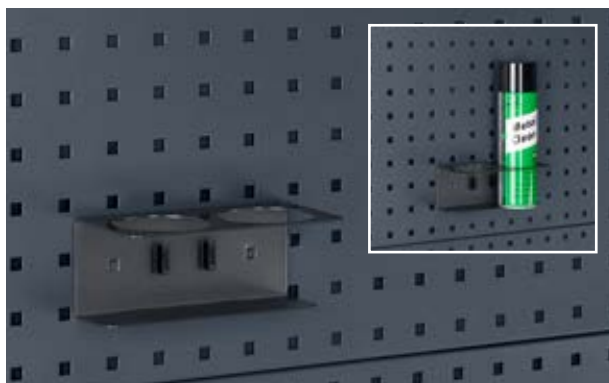
Our perfo perforated wall system provides efficiency and order at the workplace. When tools and small parts are systematically organised, fast access is guaranteed. perfo offers a standardised system with many different hooks and tool holders.

In the bott vario3 in-vehicle equipment, the perfo grid is a standard feature on the end frames. In addition, perforated panels can be provided for the vehicle side linings or vehicle bulkhead.

Furthermore, the perfo perforated panels can be integrated into cubio cabinets and maintenance trolleys. Our perfo perforated panels are particularly suitable for wall or workbench mounting. In addition, free-standing perfo racks and perfo trolleys provide many possibilities for flexible positioning of tools and materials.

perfo bottle holder

- Powder-coated steel, anthracite grey RAL 7016
- With 2 locations, max. Ø 70 mm



Pack quantity	1
Dimensions W x D x H [mm]	175 x 87 x 70
Order ref.	14021053.19V

perfo extended hook

- With wide backplate
- Extended hook end (35 mm)



Pack quantity	5	5	5
Dimensions W x D x H [mm]	60 x 25 x 60	60 x 50 x 60	60 x 75 x 60
Order ref.	14001117	14001119	14001121

perfo water dispenser set

- 12 litre holding capacity
- Dispensing tap on container base
- With aluminium shelf and fixing strap
- Dispenser bottle with pump dispenser for on-site filling with cleaning agent or disinfectant



Pack quantity	1
Dimensions W x D x H [mm]	370 x 185 x 375
Order ref.	63003059.19V

perfo paper roll holder, self-securing

- For paper rolls with a max. width of 260 mm, Ø 280 mm
- Includes 1 paper roll



Version	Paper roll holder	Paper rolls
Pack quantity	1	12
Dimensions W x D x H [mm]	315 x 185 x 180	200 x 130 x 130
Order ref.	63003058.19V	63003074.90V

perfo hook kit

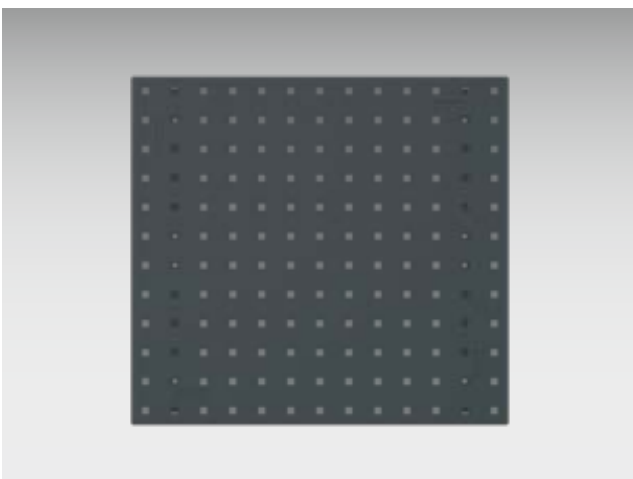


- Contents
- 2 Hooks D 50 mm
- 2 Hooks D 75 mm
- 2 Extended hooks D 50 mm
- 2 Extended hooks D 75 mm
- 2 Double hooks 75 mm
- 1 Cable hook 100 mm
- 1 Power tool holder 40 mm
- 1 Power tool holder 60 mm
- 1 perfo spanner

Order ref.

14030215

perfo perforated panels



- High rigidity due to side folds
- Additional reinforcements on the back
- Perforation: 9.2 x 9.2 mm, hole spacing: 38.1 mm
- Accessories lock into place with the supplied clip
- Hole spacing is maintained across the panel edge in multiple panel installations

Dimensions W x D x H [mm]	495 x 13 x 457	991 x 13 x 457	1486 x 13 x 457	1981 x 13 x 457
Order ref.	14025115.19	14025117.19	14025118.19	14025119.19

bottTainer

Theft protection

Fast and ergonomic access

Optimal storage
space organisation



Storage space organisation

bottTainer is excellent for organising storage space and restraining loads in the open cargo area. With the divided stowage boxes you always have a good overview of the equipment on your flatbed. You can access your materials and tools quickly and ergonomically at any time via the inner drawers, which are secured and protected with doors or shutters.

The robust frame construction lends the bottTainer high stability. The seals protect your equipment from water ingress and ensure it stays dry. With secure locks, your goods are always protected against theft. You can select your preferred bottTainer model from many different pre-configurations. Or you can let us configure it for you according to your individual requirements.



Stability and safety

- High stability thanks to robust frame construction
- Hard-wearing surfaces:
Sides and floors made of galvanized sheet steel
- Two robust locks secure transported goods against theft
- Raised feet guarantee protection from standing moisture

Order and convenience

- Drawer dividers for the clear storage of small parts
- Quick access to the most important equipment via side doors, roller shutters or internal drawers without climbing onto the flatbed
- High degree of weather and splash protection for tools and materials

Versatility

- Easy load restraining on the flatbed
- Available either with an aluminium chequer plate lid or aluminium roller shutter
- Various storage space layouts and configurations

Further solutions for the flatbed

- Load-restraint blankets to secure the load on the flatbed, especially suitable for loose and irregularly shaped items that need to be transported
- Flatbed storage compartment for the rapid and easy securing of loads, to transport shovels, brooms and other tools
- Robust designs made of weatherproof materials

bottTainer with hinged lid



- Slip-resistant aluminium chequer plate lid
- Gas spring secures lid in open position
- Two robust locks secure transported goods against theft

External dimensions W x D x H mm	1750 x 650 x 760	1930 x 650 x 760
Load capacity kg	200	200
Weight kg	63	69
Order ref.	60020001.51M	60020002.51M

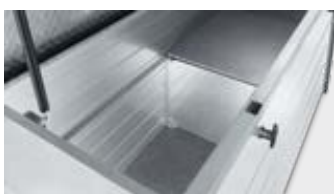
bottTainer with hinged lid and removable shelf



- Slip-resistant aluminium chequer plate lid
- Kitted with 2-piece, removable intermediate shelf
- Gas spring secures lid in open position
- Two robust locks secure transported goods against theft

External dimensions W x D x H mm	1750 x 650 x 760	1930 x 650 x 760
Load capacity kg	300	300
Weight kg	71	77
Order ref.	60020003.51M	60020004.51M

bottTainer divider for shelves



- Divider for positioning above the intermediate shelf

Order ref.	63001110.98V
-------------------	---------------------

bottTainer with doors and intermediate shelf



- Slip-resistant aluminium chequer plate lid
- Possible versions:
 - left and right, each with 1 large door or each with 2 doors located one above the other with sturdy locks
 - Firmly secured intermediate shelf
 - Upper door can also be opened when the drop sides are closed
 - The lower compartment can be configured with drawers as an option
 - Incl. divider for subdividing the top compartment

Drawer set*	Standard duty 70 kg	Standard duty 50 kg
Dimensions W x D x H mm	1x 175x540 / 1x 300x540	1x 175x795 / 1x 300x795
Order ref.	60022011.19M	60022012.19M

External dimensions W x D x H mm	1750 x 630 x 1130	1750 x 630 x 1130	1930 x 630 x 1130	1930 x 630 x 1130
Version	4 doors	2 doors	4 doors	2 doors
Load capacity kg	300	300	300	300
Weight kg	99	98	106	105
Order ref.	60022001.51M	60022003.51M	60022002.51M	60022004.51M

bottTainer with roller shutters



- Weatherproof and lockable roller shutter made of robust aluminium
- Quick access to the complete usable volume



External dimensions W x D x H mm	1365 x 710 x 910
Version	Drop-front shelves, bottBox sliding shelf with bottBoxes
Weight kg	76
Order ref.	60021011.51M

bottTainer crane lift rings



- 4 crane lift rings for quick mobile transport
- Powder-coated
- Colour: jet black (RAL 9005)
- Fixings included

Order ref.	90099590.63
-------------------	--------------------

bottTainer forklift base



- Forklift base for quick mobile transport
- Zinc-plated
- Includes fixing kit

For bottTainer	with hinged lid	with roller shutter
Dimensions D x H mm	650 x 130	710 x 130
Order ref.	60020018.51M	60021006.51M

bott flatbed storage compartment



- For mounting on the flatbed for quick and simple load restraint
- For transporting shovels, brooms and other tools
- Width is adjustable from 1700 - 2136mm, thus suitable for almost all flatbeds
- Robust construction made of weather-resistant aluminium chequer plate, secured at each end when the drop-sides are closed



Version	Flatbed storage compartment	Fixing kit
Dimensions W x D x H mm	1700 - 2136 x 622 x 382	
Order ref.	60020029.98V	90099667

Load-restraint blanket for flatbed vehicles



- For securing the load on the flatbed
- Especially suitable for loose or bulky transported goods
- Theft protection thanks to the opaque fabric
- Tested according to VDI 2700
- Load capacity up to 200 daN
- Colour: anthracite grey
- 4 fabric dimensions for all common flatbed sizes
- Incl. lashing eyes for the drop sides



Flatbed length	2100-2650	2650-3200	3200-3750	3750-4300
Fabric version	S	M	L	XL
Order ref.	62627015.19V	62627016.19V	62627017.19V	62627018.19V



*„All of my tools are stored securely in the bottTainer.
I carry everything I need at the construction site with me on my
flatbed. It's stored in a dry and clean place that is also locked.
Thieves therefore haven't got a chance.“*





If you have questions relating to bott products or would like to place an order by telephone,
please contact our dialog-aktiv tele-sales team on:
+49 (0) 7971 / 251 – 251.

Alternatively, please send an email to: **info@bott.de**

www.bott.de

Bott GmbH & Co. KG, Bahnstraße 17, 74405 Gaildorf, Germany
dialog-aktiv: Tel: +49 (0)79 71 / 251-251, Fax: +49 (0)79 71 / 251-205