

WORKSHOP AND WAREHOUSE EQUIPMENT



verso

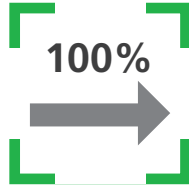


The new verso range

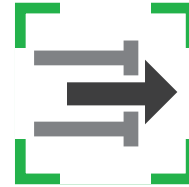
verso FEATURES



Central locking mechanism



Full extension slide



Single extension



Delivered completely assembled*



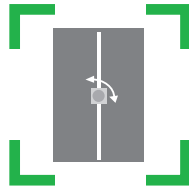
verso



Delivery time 15 working days



Total load capacity



Recessed handle with 3-point locking



3 years warranty

As illustrated below, bott verso drawer fronts and doors are available in 4 colour options, all supplied with light grey housing.

Throughout this brochure, the verso workshop equipment is only available in RAL 5010 - gentian blue. If you would like to order one of the other colours however, (RAL7016 - anthracite grey, RAL3004 - crimson red or RAL7035 - light grey, please get in touch with your bott sales representative.



The colour panels shown may not match the original colours for printing-related reasons.

*Products marked with this icon are supplied preassembled as far as possible, for immediate use. Exceptions to this are; pull handles, the anti-roll-off lip of the mobile drawer cabinets, assembly trolleys and all accessories. The required fixings and instructions are included with the parts for assembly.

Housing:



RAL 7035 – light grey

Drawer fronts/doors:



RAL 5010 – gentian blue



Here is verso, our revamped workshop equipment in bott premium quality and the proven design. The special thing about it is not only its outstanding quality, but also the attractive price. verso is robust and solidly made. The verso product range offers a total of 1,700 products in four different colours. Its modular design gives you lots of flexible configuration options.

DRAWER CABINETS



SCAN ME

See the 3D model in your own workshop

"Sturdy and safe – the right drawer for every tool."



Total load capacity



Drawer load capacity



Full extension slide



Single extension



Central locking mechanism



Delivered completely assembled



Delivery time 15 working days

Drawer cabinets Width 525 mm



Housing

- Reinforced and welded for demanding requirements and a long service life
- Load capacity: 1 tonne
- Light grey powder-coated (RAL 7035)
- With central locking mechanism
- Optionally available with single extension
- Various cabinet tops are available as accessories



Drawers

- Drawer front with ergonomic handle
- Roller bearing slides with full extension slide and 40 mm overextension
- Load capacity up to 75 kg
- Comprehensive divider material available



Hinged doors

- 180° opening angle
- Stable lock
- Large useful space with additional shelf

Height 800 mm



Depth [mm]	550	550	550
Version	With central locking	With central locking	With central locking
Number of drawers	2 / door	5	6
Front height [mm]	2x100	2x100, 3x175	1x100, 5x125
Order ref.	16925016.11	16925012.11	16925014.11



Depth [mm]	550	550	550
Version	With central locking and drawer blocking mechanism	With central locking and drawer blocking mechanism	With central locking and drawer blocking mechanism
Number of drawers	2 / door	5	6
Front height [mm]	2x100	2x100, 3x175	1x100, 5x125
Order ref.	16925316.11	16925312.11	16925314.11

Drawer cabinets Width 525 mm

Height 900 mm



Depth [mm]	550	550	550
Version	With central locking	With central locking	With central locking
Number of drawers	2 / door	5	7
Front height [mm]	1x125, 1x175	1x125, 4x175	4x100, 2x125, 1x175
Order ref.	16925037.11	16925017.11	16925029.11



Depth [mm]	550	550	550
Version	With central locking and drawer blocking mechanism	With central locking and drawer blocking mechanism	With central locking and drawer blocking mechanism
Number of drawers	2 / door	5	7
Front height [mm]	1x125, 1x175	1x125, 4x175	4x100, 2x125, 1x175
Order ref.	16925337.11	16925317.11	16925329.11

Drawer cabinets Width 525 mm

Height 1000 mm



Depth [mm]	550	550	550
Version	With central locking	With central locking	With central locking
Number of drawers	3 / door	7	9
Order ref.	16925061.11	16925049.11	16925057.11



Depth [mm]	550	550	550
Version	With central locking and drawer blocking mechanism	With central locking and drawer blocking mechanism	With central locking and drawer blocking mechanism
Number of drawers	3 / door	7	9
Order ref.	16925361.11	16925349.11	16925357.11



Drawer dividers 18–19



Anti-roll-off lip 11

Drawer cabinets Width 1050 mm

Height 800 mm



Depth [mm]	550	550
Version	With central locking	With central locking
Number of drawers	5	6
Order ref.	16925212.11	16925214.11



Depth [mm]	550	550
Version	With central locking and drawer blocking mechanism	With central locking and drawer blocking mechanism
Number of drawers	5	6
Order ref.	16925512.11	16925514.11



Drawer cabinets Width 1050 mm

Height 900 mm



Depth [mm]	550	550
Version	With central locking	With central locking
Number of drawers	5	7
Front height [mm]	1x125, 4x175	4x100, 2x125, 1x175
Order ref.	16925217.11	16925229.11



Depth [mm]	550	550
Version	With central locking and drawer blocking mechanism	With central locking and drawer blocking mechanism
Number of drawers	5	7
Front height [mm]	1x125, 4x175	4x100, 2x125, 1x175
Order ref.	16925517.11	16925529.11



Drawer dividers 18–19



Anti-roll-off lip 11

Drawer cabinets Width 1050 mm

Height 1000 mm



Depth [mm]	550	550
Version	With central locking	With central locking
Number of drawers	7	9
Order ref.	16925249.11	16925257.11



Depth [mm]	550	550
Version	With central locking and drawer blocking mechanism	With central locking and drawer blocking mechanism
Number of drawers	7	9
Order ref.	16925549.11	16925557.11

Accessories for drawer cabinets

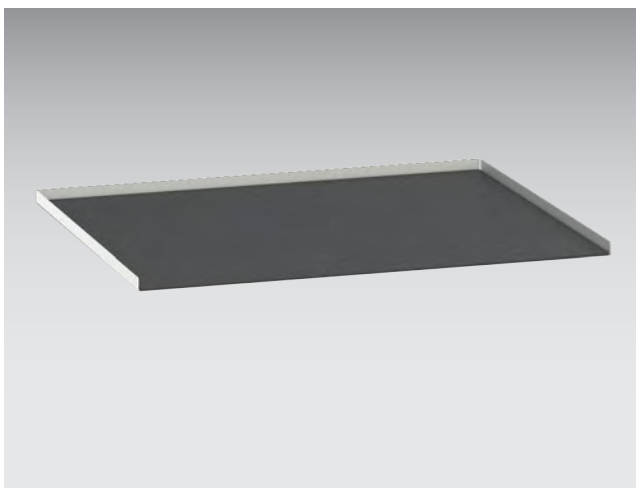
Multiplex top



- Robust 30 mm multiplex worktop
- Provides a practical working surface

For system width [mm]	525	1.050
For system depth [mm]	550	550
Order ref.	41201147.08	41201150.08

Top tray kit with anti-slip mat



- 3-sided raised lip with anti-slip mat
- Prevents small and round objects falling off

For system width [mm]	525	1.050
For system depth [mm]	550	550
Order ref.	16926930.16	16926932.16



Drawer dividers 18–19



Anti-roll-off lip 11

MOBILE DRAWER CABINETS



SCAN ME

See the 3D model in your own workshop

"Transporting materials throughout the working environment."



Total load capacity



Drawer load capacity



Full extension slide



Single extension



Central locking mechanism



Delivered completely assembled



Delivery time 15 working days

Mobile drawer cabinets



Housing

- Reinforced and welded for demanding requirements and a long service life
- Light grey powder-coated (RAL 7035)
- With central locking mechanism and single extension for drawers
- Hinged doors with 180° opening angle, covering a large useful space with an additional shelf



Drawers

- Drawer front with ergonomic handle
- Roller bearing slides with full extension slide and 40 mm overextension
- Load capacity up to 50 kg
- Comprehensive divider material available



Mobility

- With 2 swivel and 2 fixed castors
- Ergonomic pull handles
- With a choice of 3-sided anti-roll-off lip and anti-slip mat or multiplex worktop
- Total load capacity including cabinet weight: 300 kg

Width 800 mm



Depth [mm]	550	600
Height [mm]	965	980
Version	Top tray kit with anti-slip mat	Multiplex top
Number of drawers	5	5
Order ref.	16927002.11	16927001.11

Mobile drawer cabinets

Width 1050 mm



Depth [mm]	550	600	550	600
Height [mm]	965	980	965	980
Version	Top tray kit with anti-slip mat	Multiplex top	Top tray kit with anti-slip mat	Multiplex top
Number of drawers	5	5	6	6
Order ref.	16927052.11	16927051.11	16927055.11	16927054.11

Width 1050 mm



Depth [mm]	550	600	550	600
Height [mm]	965	980	965	980
Version	Top tray kit with anti-slip mat	Multiplex top	Top tray kit with anti-slip mat	Multiplex top
Number of drawers	5	5	6	6
Order ref.	16927122.11	16927121.11	16927125.11	16927124.11

Width 1300 mm



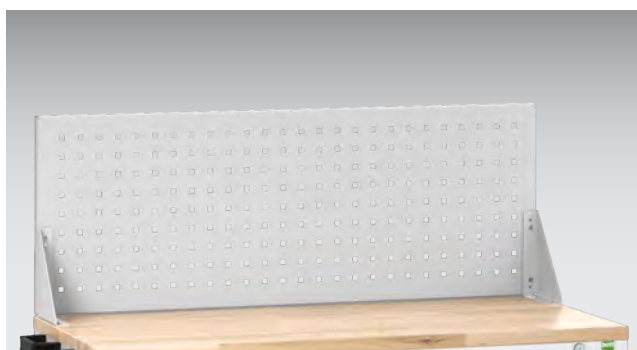
Depth [mm]	550	600
Height [mm]	965	980
Version	Top tray kit with anti-slip mat	Multiplex top
Number of drawers	5	5
Order ref.	16927152.11	16927151.11

Accessories for mobile drawer cabinets and maintenance trolleys



Depth [mm]	550	600
Height [mm]	965	980
Version	Top tray kit with anti-slip mat	Multiplex top
Quantity of drawers	6	6
Front height [mm]	3x100, 2x125, 1x175	3x100, 2x125, 1x175
Order ref.	16927155.11	16927154.11

Rear panel



- To create ergonomic work stations
- Can be screwed directly to the wooden worktop of drawer cabinets (W 1050mm) or installation trolleys (W 1300mm)
- Suitable for all perfo hooks and small parts boxes
- Sturdy steel construction, light grey powder coated (RAL 7035)



Dimensions W x D x H [mm]	1050 x 215 x 400	1050 x 215 x 400	1050 x 215 x 400
Version	With perfo panel	With louvred panel	With louvred panel, with 6 bottBoxes M1 and 6x bottBoxes M2
Order ref.	41022029.16	41022030.16	41022031.16



Dimensions W x D x H [mm]	1300 x 215 x 400	1300 x 215 x 400	1300 x 215 x 400
Version	With perfo panel	With louvred panel	With louvred panel, with 8x bottBoxes M1 and 8 bottBoxes M2
Order ref.	41022032.16	41022033.16	41022034.16



Drawer dividers 18–19



Anti-roll-off lip 11

COMPUTER WORKSTATIONS



SCAN ME

See the 3D model in
your own workshop

*"A dusty and
dirty PC is a thing
of the past!"*



Total load capacity



Drawer load capacity



Shelf load capacity



Full extension slide



Handle recess with
3-point locking



Delivered completely
assembled



Delivery time 15 work-
ing days

Computer unit Width 650 mm



Housing and hinged door

Housing

- Reinforced and welded for demanding requirements and a long service life
- Light grey powder-coated (RAL 7035)
- With ventilation holes and cable feedthroughs

Hinged door

- Opening angle 180°
- Large useful space with additional shelf
- Stable lock with 3-point locking



Monitor housing and keyboard drawer

monitor housing

- Suitable for flat screen monitors up to 23 inches
- With ventilation holes and cable routing apertures
- Lockable

Keyboard drawer

- For ergonomic work
- Roller bearing slides with full extension
- Lockable

Depth 550 mm



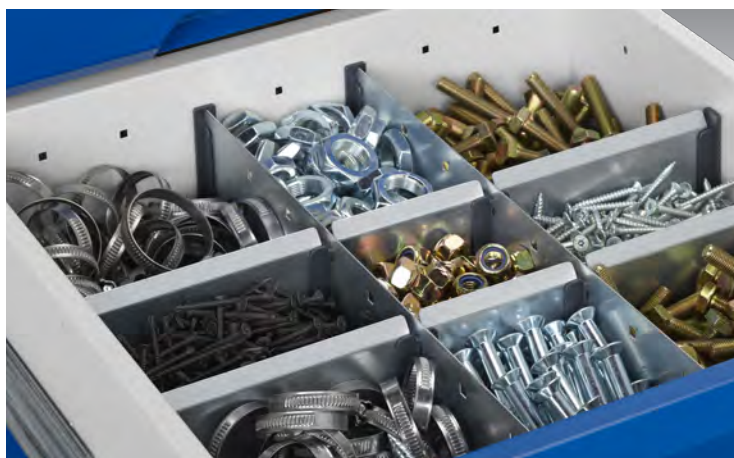
Dimensions W x D x H [mm]	650 x 550 x 1000	650 x 550 x 1650
Version	With shelf and sliding tray	With screen cupboard, shelf and sliding tray
Order ref.	16928000.11	16928001.11

Depth 150/550 mm



Dimensions W x D x H [mm]	650 x 550 x 150	500 x 150 x 410
Version	Mobile kit for computer cupboards	laptop holder
Order ref.	16928052.16	16912350.11V

Drawer dividers Depth 550 mm



Dividers and cross dividers

- For the simple, fast and individual division of the drawers
- Zinc-plated sheet steel
- Optional labelling with labelling kit
- Low noise thanks to plastic divider clips

Divider/cross divider kits Width 525 mm



For system depth [mm]	550	
Quantity of dividers	2	
Quantity of cross dividers	6	
Front height of drawer [mm]	100/125	175
Height of the cross dividers [mm]	77	127
Order ref.	16926804.51	16926805.51

Divider/cross divider kits Width 1050 mm



For system depth [mm]	550	
Quantity of dividers	4	
Quantity of cross dividers	8	
Front height of drawer [mm]	100/125	175
Height of the cross dividers [mm]	77	127
Order ref.	16926842.51	16926843.51

Drawer dividers Depth 550 mm



Small parts storage boxes

- For the simple, fast and individual division of the drawers
- Material: impact-resistant polystyrene(PS)
- Rounded corners for easy removal of small parts
- Optional labelling with label holders

Small parts storage box kits Width 525/1050 mm



For system depth [mm]	550	550
Box height [mm]	68	68
Quantity of small parts storage boxes 50 x 50 [mm]	2	2
Quantity of small parts storage boxes 50 x 75 [mm]	6	13
Quantity of small parts storage boxes 75 x 75 [mm]	–	1
Quantity of small parts storage boxes 75 x 150 [mm]	2	7
Quantity of small parts storage boxes 100 x 150 [mm]	2	2
Quantity of small parts storage boxes 150 x 150 [mm]	2	6
Quantity of small parts storage boxes 300 x 150 [mm]	1	2
Order ref.	43020789	43020791

CUPBOARDS



SCAN ME
See the 3D model
in your own
workshop

*"Everything in its
place – just how
I like it."*



Total load capacity



Drawer load capacity



Shelf load capacity



Full extension slide



Handle recess with
3-point locking



Delivered completely
assembled

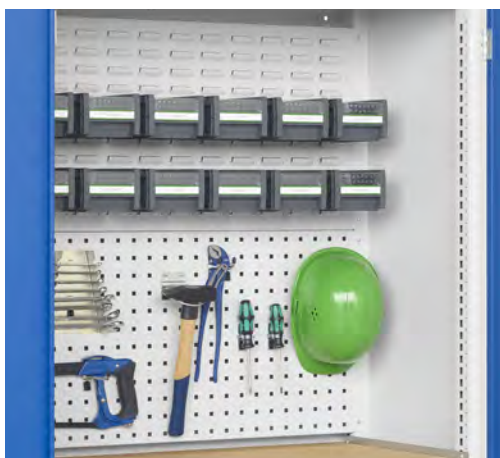


Delivery time 15 work-
ing days

Cupboards Width 1050 mm



Housing and hinged doors



Extensive internal options



Housing

- Reinforced and welded for demanding requirements and a long service life
- Light grey powder-coated (RAL 7035)

Hinged doors

- Opening angle 180°, stable lock with 3-point locking
- Available with either plain, with viewing window or ventilation, depending on variant

Depth 350 mm

- Shelf, load capacity up to 75 kg, ideal for bottBoxes
- Rear panels with perforation or louvred form
- Multiplex shelf

Depth 550 mm

- Shelf, load capacity up to 75 kg
- Rear panels with perforation or louvred form
- Multiplex shelf
- Internal drawers with full extension slide and 40 mm overextension, load capacity up to 75 kg

Depth 350 mm



Door variant	plain	plain
Configuration	4x shelf	8x shelf 9x bottBox M3 27x bottBox L3
Order ref.	16926219.11	16926505.11

Cupboards Width 1050 mm

Depth 550 mm



Dimensions W x D x H [mm]	1050 x 550 x 2000	1050 x 550 x 2000
Door variant	plain	plain
Configuration	4x shelf	4x shelf 2x internal drawer (H: 125 mm)
Order ref.	16926267.11	16926574.11



Dimensions W x D x H [mm]	1050 x 550 x 2000	1050 x 550 x 2000
Door variant	plain	plain
Configuration	3x shelf 4x internal drawer (H: 1x 100 mm, 2x 125 mm, 1x 175 mm)	3x shelf 8x internal drawer (H: 2x 100 mm, 4x 125 mm, 2x 175 mm)
Order ref.	16926576.11	16926577.11



Dimensions W x D x H [mm]	1050 x 550 x 2000	1050 x 550 x 2000
Door variant	plain	plain
Configuration	1x rear panel with perfo perforation 1x rear panel with perfo louvred form 1x multiplex shelf 6x internal drawer (H: 4x 125 mm; 2x 175 mm)	1x rear panel with perfo perforation 1x rear panel with perfo louvred form 1x multiplex shelf 3x internal drawer (H: 1x 100 mm; 1x 125 mm; 1x 175 mm) 1x shelf
Order ref.	16926573.11	16926572.11

Cupboards Width 1050/1300 mm

Depth 550 mm



Dimensions W x D x H [mm]	1050 x 550 x 2000	1050 x 550 x 2000
Version Door	with window door	with ventilated door
Configuration	4x shelf	4x shelf
Order ref.	16926277.11	16926770.11



Dimensions W x D x H [mm]	1300 x 550 x 2000	1300 x 550 x 2000
Version Door	with window door	with ventilated door
Configuration	4x shelf	4x shelf
Order ref.	16926663.11	16926783.11



Drawer dividers 18–19



Anti-roll-off lip 11

Accessories for cupboards

Shelf



- Shelf with support bracket left and right
- Load capacity: 75 kg
- Material: zinc-plated sheet steel

For system width [mm]	525	1.050	1.050
For system depth [mm]	550	350	550
Order ref.	16926912.51	16926916.51	16926918.51

Shelf divider



- Adjustable shelf dividers for mounting onto shelves
- Pack quantity: 3 pieces
- Depth: 350 mm
- Material: zinc-plated sheet steel

Dimensions W x D x H [mm]	50 x 309 x 116
Order ref.	16926870.51

Economy cupboards



Drawers

- Drawer front with ergonomic handle
- Load capacity up to 10 kg



Housing and hinged doors

Housing

- Welded steel housing for light applications
- Light grey powder-coated (RAL 7035)
- The 350 mm versions can also be installed on the wall

Hinged doors

- Opening angle 180°
- Large useful space with additional shelf (35 kg)
- Espagnolette lock

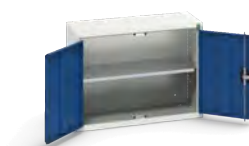


Width 525 mm



Dimensions W x D x H [mm]	525 x 350 x 600	525 x 350 x 600
Version Door	plain	plain
Configuration	1x shelf	2x shelf 1x drawer
Order ref.	16929001.11	16929003.11

Width 800 mm



Dimensions W x D x H [mm]	800 x 350 x 600	800 x 350 x 600
Version Door	plain	plain
Configuration	1x shelf	2x shelf 1x drawer
Order ref.	16929101.11	16929103.11



Drawer dividers 18–19

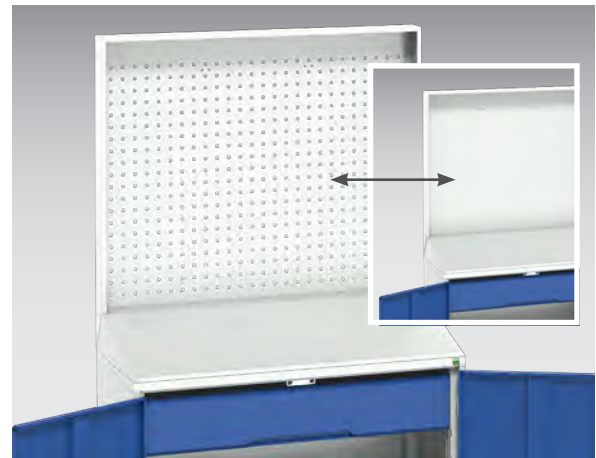


Anti-roll-off lip 11

Lectern cupboards



Housing and hinged doors



Desk panel and drawer

Housing

- Reinforced and welded for demanding requirements and a long service life
- Light grey powder-coated (RAL 7035)

Hinged door

- Opening angle 180°
- Large useful space with additional shelf
- Stable lock with 3-point locking

Desk panel

- For ergonomic working conditions
- With tray for pens
- Various rear panels are available as accessories

Drawers

- Drawer front with ergonomic handle
- Roller bearing slides with full extension slide and 40 mm overextension
- Load capacity up to 75 kg
- Comprehensive divider material available

Width 525/1050 mm



Dimensions W x D x H [mm]	525 x 550 x 1130	1050 x 550 x 1130
Version Door	plain	plain
Configuration	1x shelf, 1 drawer	1x shelf, 1 drawer
Order ref.	16926370.11	16926590.11

Lectern cupboards

Lectern plain backpanel



Dimensions W x D x H [mm]	525 x 95 x 1000		1050 x 95 x 1000	
Version	plain	perfo perforation	plain	perfo perforation
Order ref.	16926980.16	16926981.16	16926984.16	16926985.16



Drawer dividers 18-19



Anti-roll-off lip 11

SHELVES

*"Hurray – at last
everything is
stored clearly!"*



Total load capacity



Shelf load capacity

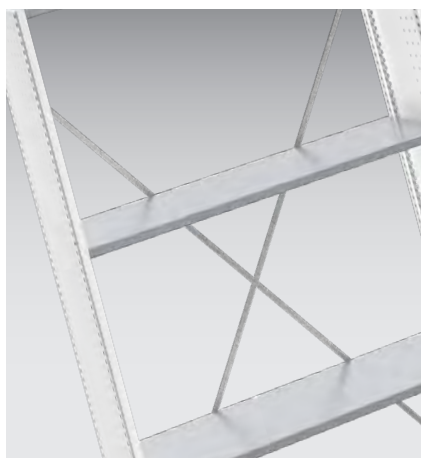


Flat-packed delivery
Easy installation



Delivery time 15 work-
ing days

Shelves Width 1150 mm



Complete variants

- Flexible and sturdy shelf system
- Sensibly equipped
- Easy to extend
- Incl. stabilising cross and wall fixing set



Extension elements

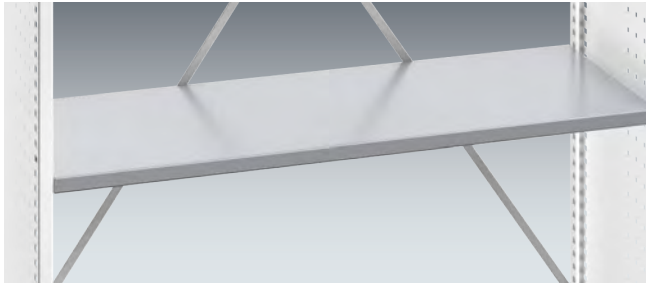
- End frames, shelves and other accessories
- For extending existing shelf bays
- For configuring individual shelf systems

Height 2000 mm



Dimensions W x D x H [mm]	1150 x 420 x 2000	1150 x 420 x 2000	1150 x 420 x 2000
Configuration	4x shelf	8x shelf, 24x bottBox L4 (W 264 x D 398 x H 165 mm)	5x shelf, 8x bottBox L4 (W 264 x D 398 x H 165 mm), 2x small parts angled shelf tray
Order ref.	46003001.16	46003002.16	46003003.16

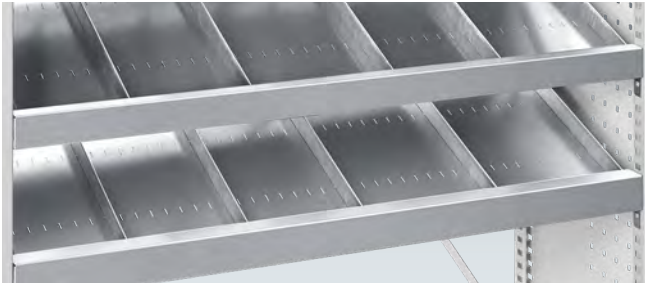
Shelves Width 1150 mm



Shelf

- Robust construction made of zinc-plated sheet steel
- Load capacity: 70 kg
- Incl. 4 support brackets for rapid and easy assembly
- W 1150 x D 420 x H 27 mm

Designation	Shelf	Shelf divider VE3
Order Ref.	46003004.51	41022024.51



Angled shelf tray for small parts

- To store consumables such as screws and standard parts
- For a clever supply of materials, since shortages are obvious at once
- With 5 dividers for individual and flexible division
- Load capacity: 70 kg
- Material: zinc-plated sheet steel
- Incl. 4 support brackets for rapid and easy assembly
- W 1150 x D 420 x H 190 mm

Order Ref.	46003005.51
-------------------	--------------------

Individual elements

- To expand the shelf system

Shelf side piece

- Solid sheet steel construction
- Light grey powder-coated (RAL 7035)
- 25 mm pitch for flexible subdivision with shelves and shelf depositories for small parts

Stabilising cross

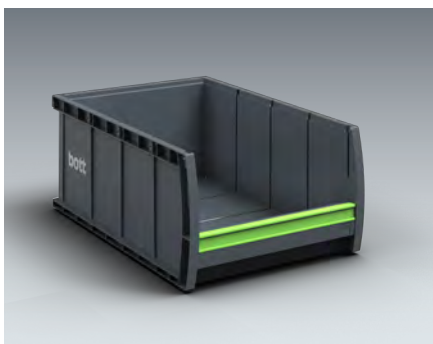
to reinforce the shelf

Fixing kit for the wall

for the secure wall mounting of shelf extensions

Spare parts set (8x clip nuts, screw and support brackets)

Designation	Shelf side piece	Stabilising cross	Fixing kit for the wall	Spare parts set
Dimensions W x D x H mm	25 x 420 x 2000	-	-	-
Order Ref.	46003007.16	46003008.16	46003009	90099653



Kits with 4 bottBoxes

- Suitable for 1 shelf
- Size L4 (W 264 x D 398 x H 165 mm)
- Material: Plastic RAL 7016

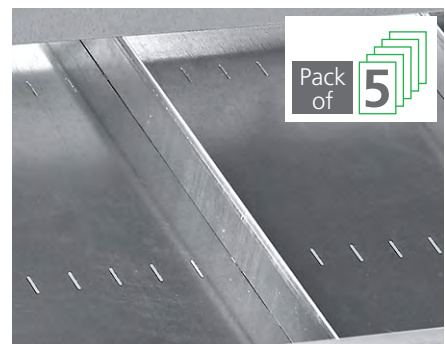
Order Ref.	43021012.19
-------------------	--------------------



Kits with 8 bottBoxes

- Suitable for 1 shelf
- Size M4 (W 130 x D 398 x H 165 mm)
- Material: Plastic RAL 7016

Order Ref.	43021013.19
-------------------	--------------------



Divider set

- For the shelf depository for small parts
- Material: zinc-plated sheet steel

Order Ref.	46003010.51
-------------------	--------------------



Drawer dividers 18–19



Anti-roll-off lip 11

FRAMEWORK BENCHES



SCAN ME

See the 3D model in
your own workshop

"Ready
for use in your
workspace."



Total load capacity



Drawer load capacity



Full extension slide



Central locking mechanism



Flat-packed delivery
Easy installation



Delivery time 15 working days

Workbenches Depth 800 mm



Framework bench

- Workbench leg height adjustable with 25 mm pitch
- Stringer set for additional stability
- Sturdy 30 mm worktops made of multiplex or linoleum
- Load capacity up to 600 kg



Drawer cabinet

- Sturdy and welded housing for demanding requirements and a long service life
- With central locking mechanism
- Roller bearing slide with full extension slide and 40 mm overextension
- Drawers load capacity up to 75 kg
- Comprehensive divider material available

Width 1500/2000 mm



Dimensions W x D [mm]	1500 x 800	2000 x 800
Work height table top from - to [mm]	780-930	780-930
Stringers bottom	Yes	Yes
Load capacity [kg]	600	600
Worktop	mpx	mpx
Order ref.	16921512.16	16921514.16

Framework benches

Width 1500 mm



Dimensions W x D [mm]	1500 x 600	1500 x 600	1500 x 600
Number of drawers	2	5	7
Front height [mm]	1x125, 1x175	1x125, 4x175	4x100, 2x125, 1x175
Load capacity [kg]	500	500	500
Worktop	mpx	mpx	mpx
Order ref.	16921902.11	16921900.11	16921901.11

Width 2000 mm



Dimensions W x D [mm]	2000 x 600	2000 x 600	2000 x 600
Number of drawers	2	5	7
Front height [mm]	1x125, 1x175	1x125, 4x175	4x100, 2x125, 1x175
Load capacity [kg]	500	500	500
worktop	mpx	mpx	mpx
Order ref.	16921952.11	16921950.11	16921951.11



STORAGE BENCHES



SCAN ME

See the 3D model in
your own workshop

Sturdy & High
Quality.



Total load capacity



Drawer load capacity



Full extension slide



Central locking mechanism



Delivered completely assembled



Delivery time 15 working days

Storage benches



Housing, worktop and hinged doors

- Sturdy and welded housing for demanding requirements and a long service life
- Robust 30 mm multiplex worktop
- Load capacity up to 800 kg
- Doors with 180° opening angle and stable lock
- Large useful space with additional shelf



Drawers

- Drawer front with ergonomic handle
- Roller bearing slides with full extension slide and 40 mm overextension
- Load capacity up to 75 kg
- Load capacity per drawer block: 150 kg
- Comprehensive divider material available

Width 1500 mm



Dimensions W x D [mm]	1500 x 600	1500 x 600	1500 x 600
Height [mm]	830-930	830-930	830-930
Number of drawers	3 / door	6	3
Front height [mm]	1x125, 2x175	2x125, 4x175	1x125, 2x175
Load capacity [kg]	800	800	800
Worktop	mpx	mpx	mpx
Order ref.	16923014.11	16923015.11	16923012.11

Storage benches

Width 2000 mm



Dimensions W x D [mm]	2000 x 600	2000 x 600
Height [mm]	830-930	830-930
Number of drawers	3 / door	9
Front height [mm]	1x125, 2x175	3x125, 6x175
Load capacity [kg]	800	800
Worktop	mpx	mpx
Order ref.	16923032.11	16923033.11



Accessories for workbenches

Rear panel kit



- For mounting directly on a worktop
- High stability thanks to vertical struts
- Colour: light grey (RAL 7035)

Dimensions W x D x H [mm]	1500 x 230 x 480	1500 x 230 x 960	2000 x 230 x 480	2000 x 230 x 960
Number of perfo panels	1	2	1	2
Order ref.	41022006.16	41022007.16	41022008.16	41022009.16

Rear framework



- For mounting directly on a worktop
- Shelves kitted with bottBox M3 (130 x 298 x 165 mm)
- Optional perfo perforated or louvred panels
- Colour: light grey (RAL 7035)

Version	perfo perforated panel, shelf with 10 bottBoxes	perfo louvred panel, shelf with 10 bottBoxes	perfo perforated panel, shelf with 13 bottBoxes	perfo louvred panel, shelf with 13 bottBoxes
Dimensions W x D x H [mm]	1350 x 435 x 1357		1800 x 435 x 1357	
Order ref.	41022002.16	41022003.16	41022004.16	41022005.16

Accessories

Lockers



- With 2 or 3 compartments
- Doors with hinges on the right
- Three vents each at the top and bottom
- Punched label holder
- Espagnolette lock for padlocks
- Each compartment with one insertable hat shelf and clothes rail with 3 sliding hooks
- Sheet steel powder-coated, smooth lacquer
- Colour: Housing and doors light grey (RAL 7035), plastic feet black

Version	2 compartments		3 compartments	
Dimensions W x D x H [mm]	610 x 500 x 1850	610 x 500 x 1950	900 x 500 x 1850	900 x 500 x 1950
Order ref.	40036001.16	40036002.16	40036003.16	40036004.16

Roller stools

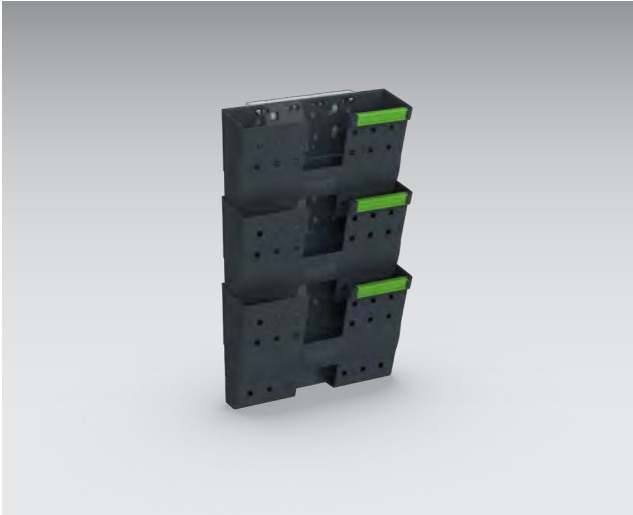


- 5-leg base with swivel castors, 2 of which can be fixed
- Seat height adjustment with gas pressure spring
- Durable, easy-to-clean moulded foam seat with Ø 350 mm
- Tool tray with 6 removable small parts storage boxes

Version	Standard	With additional tool tray
Dimensions W x D x H [mm]	350 x 350 x 500	350 x 350 x 770
Order ref.	88601054	88601002

Accessories

Workshop planners



- Guarantees order and clarity in the workshop and at the workplace
- Helps with the planning and organisation of capacities and processes
- For the clear placement of order folders, forms, brochures and other documents
- Document holder DIN A4 landscape format made of high-quality and sturdy plastic (RAL 7016), incl. label clip
- Set comprising base plate and 3x document holder DIN A4 landscape format and fixing kit
- The base plates can be screwed above one another, enabling several sets to be combined into one large planner if required

Dimensions W x D x H [mm]	340 x 120 x 516
Order ref.	41022028.19



PERFO PANELS, RACKS & TROLLEYS



SCAN ME

See the 3D model in
your own workshop

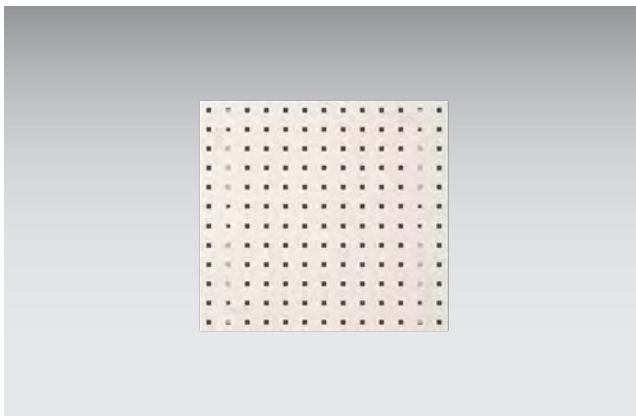
*"Quickly
and efficiently
transport materials
throughout your
workspace."*



Delivery time 15 work-
ing days

Perfo panels & hook kits

perfo Panels



- High rigidity due to side folds
- Additional reinforced profiles on the rear
- Perforation: 9.2 x 9.2 mm, hole spacing: 38.1 mm
- Interlocking connection for perfo hooks and holders on the perfo perforated panel
- The pitch is retained past the panel joint when several panels are combined

Dimensions W x D x H [mm]	495 x 13 x 457	991 x 13 x 457	1486 x 13 x 457	1981 x 13 x 457
Order ref.	41022014.16	41022015.16	41022016.16	41022017.16

perfo Louvred panels with 24 bottBoxes

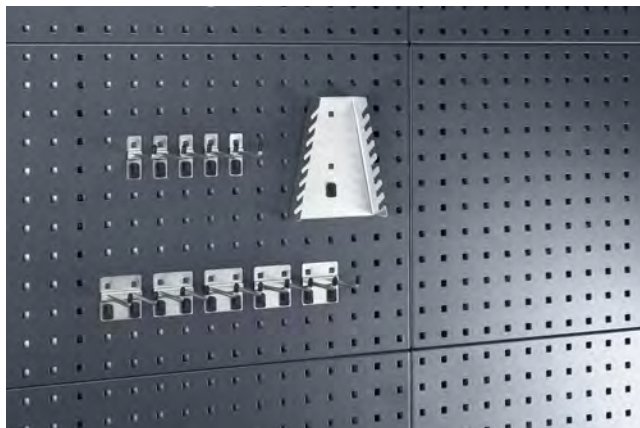


- perfo louvred panel kit consisting of:
2 panels and 24 bottBoxes M2 (130 x 198 x 90 mm)

Version	with bottBoxes
Number of bottBoxes	24 x M2
Dimensions W x D x H [mm]	914 x 213 x 495
Order ref.	43021009.16

Perfo panels & hook kits

perfo Hook assortments



- 5 Hooks D 75 mm
- 5 Double hooks D 75 mm
- 1 Spanner holder

Order ref.

43021010

perfo Hook assortments



- 5 Extended hooks D 25 mm
- 5 Extended hooks D 50 mm
- 5 Extended hooks D 75 mm
- 5 Double hooks D 50 mm
- 5 Spring clips Ø 19 mm
- 1 perfo spanner

Order ref.

43021011

Perfo racks & trolleys

with perfo louvred panels and bottBoxes



- Kit 112-piece
- 112 bottBox M2 (130 x 198 x 90 mm)

Version	with bottBoxes	empty
Number of bottBoxes	112 x M2	—
Dimensions W x D x H [mm]	1000 x 550 x 1125	1000 x 550 x 1125
Order ref.	41022011.16	41022010.16

Mobile with perfo louvred panels and bottBoxes



- Kit 84-piece
- 42 bottBox M2 (130 x 198 x 90 mm)
- 42 bottBox M3 (130 x 298 x 165 mm)
- 4 swivel & brake castors

Version	with bottBoxes	empty
Number of bottBoxes	42 x M2; 42 x M3	—
Dimensions W x D x H [mm]	1000 x 550 x 1250	1000 x 550 x 1250
Order ref.	41022013.16	41022012.16

Mobile solutions

Platform trolleys und table trolleys



- Sturdy welded construction made of steel tube
- Light grey powder-coated (RAL 7035)
- Base shelf infills made of wooden material, surface finish: beech decor
- 2 swivel castors with brake, 2 fixed castors, TPE tyres
- Hubs with grooved ball bearing



Version	Platform trolley	Table trolley with 3 levels
Load capacity [kg]	250	200
Dimensions W x D x H [mm]	600 x 1000 x 900	600 x 1000 x 1050
Order ref.	41010145.16	41010146.16

Fully welded bench



- Sturdy welded steel frame
- Light grey powder-coated (RAL 7035)
- Plenty of usable space thanks to 2 storage levels
- 2 swivel castors with brakes and 2 fixed castors (castor diameter = 125 mm)



Version	Mobile	Stationary	Mobile	Stationary
Worktop type	steel	steel	mpx	mpx
Load capacity [kg]	300	400	300	500
Dimensions W x D x H [mm]	1000 x 600 x 910	1000 x 600 x 910	1000 x 600 x 930	1000 x 600 x 930
Order ref.	16922700.16	16922502.16	16922701.16	16922503.16

Transport roller for euroboxes



- Suitable for all euroboxes and containers with floor area 400 x 600 mm
- Load capacity up to 250 kg
- Easy to clean thanks to frame made of ABS plastic with open corners
- 4 swivel castors with mark-free rubber wheels (Ø 100 mm), 2 of which have brakes
- Colour: grey

Dimensions W x D x H [mm]	420 x 620 x 165
Order ref.	41010148



Drawer dividers 18–19



Anti-roll-off lip 11



You can find further information on bott products on the Website:
www.bott.de

If you have any questions about bott products or would like to place an order by telephone, the bott dialog-aktiv telesales team will be happy to assist:
+49(0)7971 / 251 – 891.



Or you can send your query by email to: **info@bott.de**

Subject to changes in price and technical modifications.

If you have already agreed to your data being used for promotional purposes and should then change your mind, please send your subsequent revocation by e-mail to datenschutz@bott.de.

www.bott.de
Bott GmbH & Co. KG, Bahnstraße 17, 74405 Gaildorf, Germany
Phone: +49 (0)79 71 / 251-891, Fax: +49 (0)79 71 / 251-205